

TECHNICAL DATA SHEET

MicroMax NS Certificate 523142-1

Product description - High quality microporous film laminate fabric provides superior liquid resistance against liquids, light oils and light sprays of liquid chemicals.

Fabric - Microporous film laminate. 63 gsm. (Available in White and Orange)

Seam type - 3 thread over lock stitch

Style - EMN428 - Coverall with elasticated 3-piece hood, cuffs, ankles and waist. Diamond crotch gusset.
For other styles see overleaf.



CE Certification

BS EN ISO 13688:2013
BS EN ISO 13982-1:2004
BS EN ISO 13034:2005
BS EN 1073-2:2002
BS EN 1149-1:2006
BS EN 14126:2003

Protective clothing general requirements.
Type 5 equipment for protection against from hazardous dry particles.
Type 6 equipment for protection against reduced Spray of liquid chemicals.
Protective clothing against particulate radioactive contamination.
Protective clothing. Electrostatic properties. Performance requirements.
Protection from biological hazards Type 5B and Type 6B.

Mechanical Properties

EN 530
EN ISO 7854 method B
EN ISO 9073-4
EN ISO 13934-1
EN 863
EN ISO 13935-2

Test

Abrasion resistance
Flex cracking resistance
Tear resistance
Tensile strength
Puncture resistance
Seam strength

Result

>100 <500 Cycles
>15,000 <40,000 Cycles
MD = 58.5N / CD = 31.95
MD = 79.87N / CD = 34N
>9.95N
88.8N

Class

Class 2
Class 4
Class 3/2
Class 2/1
Class 1
Class 3

Protection against Liquid Chemicals EN ISO 6530

Sodium Hydroxide 10% (1310-73-2)
Sulphuric Acid 30% (7664-93-9)
Hydrochloric Acid 30% (7647-01-0)
Butan-1-ol (71-36-3)
o-Xylene (108-38-3)
N-Heptane (142-82-5)
Isopropanol (67-63-0)

Repellency

Class 3 - 97.3%
Class 3 - 97.1%
Class 3 - 97.4%
Class 3 - 98.2%
Class 3 - 96%
Class 2 - 88.7%
Class 3 - 92.6%

Penetration

Class 3 - 0%
Class 3 - 0%
Class 3 - 0%
Class 3 - 0%
Class 3 - 0%
Class 3 - 0.2%
Class 3 - 0.1%

*For further information on chemical performance or to search for a specific chemical visit: www.lakeland.com/europe

EN 14126 Barrier to Infective Agents

ISO 16604 Resistance to penetration by blood /fluid under pressure
EN 22610 Resistance to wet bacterial penetration (mechanical contact)
ISO 22611 Resistance to biologically contaminated aerosols
ISO 22612 Resistance to dry microbial penetration

Result

Pass to 20kPa
No penetration (up to 75 mins)
No penetration
No penetration

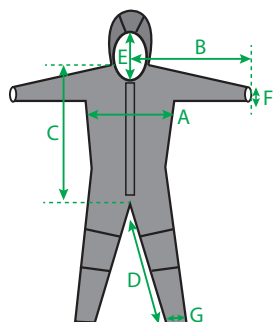
Class

6 of 6
6 of 6
3 of 3
3 of 3

Note:

We recommend a garment with bound or sealed seams for improved protection against infective agents – for example MicroMax or MicroMax TS

*ISO 16603 is a screening test used to predict the starting point for the ISO 16604 test. All ChemMax garments achieve Class 6 in this test but ISO 16603 alone is not a reliable indicator of protection against infective agents.



Garment Dimensions

Item	SML	MED	LRG	XL	XXL	XXXL
A. Chest	59.75	63	66	70	76	81
B. Sleeve	85	86	89	92	95	102
C. Back Length	92	93	97	102	106	113
D. Inseam	76	76	76	80	81	82
E. Hood opening	18-20	18-20	18-20	18-20	20-22	20-22
F. Cuffs	8-9	8-9	8-9	8-9	8-9	8-9
G. Ankles	14-15	14-15	14-15	14-15	14-15	14-15
Barcode 5060522	170006	170013	170020	170037	170044	170051

Packaging and Other Information

- Individually packed in vacuum sealed bags
- 25 units per carton
- Store in normal conditions – cool and away from strong light
- Shelf life: 10 years



Download
Declaration of Conformity

Version: 5.2.19



Notified Body: SATRA 2777 D15YN2P Product certification: BTTG 0338 M17 1EG.

For further information see www.lakeland.com/europe or contact sales-europe@lakeland.com

No information provided is intended to guarantee product suitability for any specific application:

It is always the user's final responsibility to ensure garment suitability.

Lakeland Industries Europe Ltd, Unit 9-10, Jet Park, Jet Park Way, Newport, East Yorkshire, HU15 2JU. UK

Company Registration No: 4500660: For financial information see www.lakeland.com/financial



MicroMax NS® Styles



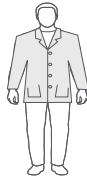
Style code 428 Size: S-3XL
Coverall with elasticated hood, cuffs, waist and ankles.



Style code L428 Size: S-3XL
Coverall with elasticated hood, cuffs, waist and ankles. Thumb loops.



Style code 414 Size: S-3XL
Coverall with elasticated hood, cuffs, waist and attached socks.



Style code 101 Size: S-3XL
Lab coat with two hip pockets and four stud fastenings.



Style code 101Z Size: M-XL
Lab Coat with 2 hip pockets, zip fastening



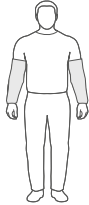
Style code 024KC One size
Sleeves



Style code 017 Size: S-3XL
Jacket, with collar, zip, double flaps with adhesive tape on it.



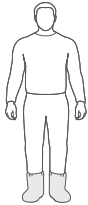
Style code 025 Size: S-3XL
Apron with ties.



Style code 024 One size
Sleeves



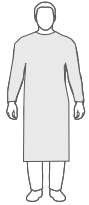
Style code 021 One size
Cape hood.



Style code 023NS Size: L-XL
Overboots with anti-slip sole



Style code 020 One size
Cape hood with elasticated face opening



Style code 527 Size: M-XL
Smock / Gown with rear entry ties and elasticated cuffs.



Style code 016 Size: S-3XL
Trousers with elasticated waist.



Style code 022NS
Overshoes with elasticated tops, anti-slip soles.
Size: One size

Style code 022ANS
Overshoes with elasticated tops, anti-static soles.
Size: One size

Available in: White Green Orange
Not all styles are available from European stock in this fabric



Lakeland 'Super-B' Style

Lakeland CE garments use a specific ergonomically styled pattern that features a unique combination of three key factors, along with other helpful design elements.

1 Three-piece hood with shaped centre-piece

Some cheaper garments feature a simple 2-piece hood. Such hoods do not fit the head properly, restrict head movement and generally have a poor fit to respirator masks.

Lakeland garments not only feature a 3-piece hood which creates a more 3-D fit and resolves these problems, in addition the centre piece is a 'pointed oval' shape resulting in an even better fitting hood.

2 Two-piece crotch gusset

The crotch is invariably the point where garments split first, partly because this is where most stress is apparent, and partly because on cheaper garments it is the point where four seams – two body and two leg - meet at one point.

Lakeland garments feature an inserted crotch gusset of two dart-shaped fabric pieces. This creates a more shaped body which spreads the stress and allows greater freedom of movement.

3 Inset Sleeves

Most garments use the traditional 'bat-wing' style sleeve, in which the body forms a diagonal between the elbow and the waist. This is cheaper to produce as it uses less fabric, but it also restricts movement when a user reaches up. It also explains why some garments need thumb loops – because it results in pulling back of the sleeve and cuff.

Lakeland garments use the more expensive inset sleeve in which the body and arm follows the shape of the body. This allows greater freedom when reaching up and results in much less pulling back of the sleeve – so no thumb loops are required.

* Many Lakeland garments are available in versions with thumb-loops where they are required for other reasons.



4 Cushioned Knee-Pads

ChemMax® garments and some Cool Suits® feature double-layer cushioned knee-pads which add comfort and durability in applications where crawling or kneeling is required.

5 Double zip and storm flap

ChemMax® garments feature a double zip with handy ring-pulls and double storm flap front fastening for superior protection.

6 Higher neck line

For improved neck protection and better respirator mask fit.

7 CE Chest Label

Lakeland CE coveralls feature a chest label containing all the legally required marking for CE certification, so users and supervisors can easily identify the correct garment is being worn.

8 Push-Lock® glove connection system

All Lakeland chemical suits feature cuffs designed to work with the Push-Lock® glove connection system (see page 9) which provides a fully sealed, Type 3 tested connection with most chemical gloves.



Notified Body: SATRA 2777 D15YN2P Product certification: BTG 0338 M17 1EG.
For further information see www.lakeland.com/europe or contact sales-europe@lakeland.com
No information provided is intended to guarantee product suitability for any specific application:
It is always the user's final responsibility to ensure garment suitability.
Lakeland Industries Europe Ltd, Unit 9
Company Registration No: 4500660: For financial information see www.lakeland.com/financial

