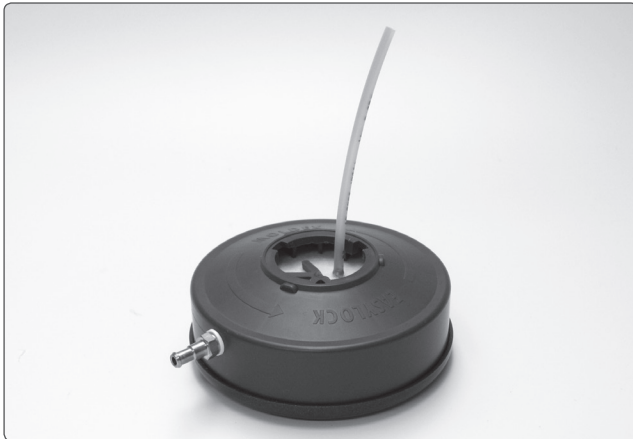


9977 PROBED CARTRIDGE KIT INSTRUCTIONS FOR QUANTITATIVE FIT TESTING WITH PORTACOUNT® GUIDELINES



made by
MOLDEX



9977 probed cartridge

The 9977 probed cartridge is for use in quantitative fit testing together with a TSI Portacount or equivalent fit test instrument. The cartridge does not contain filter media and therefore provides no protection.

CAUTION: ALWAYS PLACE THE 9977 PROBED CARTRIDGE ON THE USER'S **LEFT SIDE** OF THE RESPIRATOR.

INSTRUCTIONS

Before conducting a quantitative fit test, the 7000 or 9000 Series Respirator Facepiece must be assembled with the appropriate 9977 probed cartridge and a pair of 9030 P3 R EasyLock particulate filters.

Assembly is as follows:

Before attaching the appropriate 9977 probed cartridge, inspect the facepiece and cartridge sealing surface. Make sure it is clean and undamaged.

1. Insert tube from cartridge into the left cartridge retainer opening in the facepiece that is closest to the dot (see figure **A**). **Note:** when used with the 9000 full face mask you must also insert the tube into the inhalation opening in the nosecup, and past the rubber diaphragm (see figure **B**).



figure A



figure B

2. Check to see that the 9977 probed cartridge is seated properly, both inside and outside the facepiece. Check the inhalation diaphragms for dirt or damage and check that they are seated properly. The open end of the sampling tube should be positioned close to the wearers face (<10mm) and approximately mid way between the nose and mouth (see figure **C**).



figure C

3. Attach a new 9030 P3 R particulate filter onto the 9977 probed cartridge.
4. Make a careful inspection of all parts to ensure they are fully sealed.
5. Attach a new 9030 P3 R particulate filter onto the right connector of the face piece (see figures **D** and **E**).



figure D



figure E

6. Check all inhalation diaphragms for dirt or damage and see that they are properly seated.
7. Attach the tube to the TSI Portacount or equivalent fit test instrument and follow the instructions from the Fit Tester Manufacturer.

DE

Moldex-Metric AG & Co. KG
Tübinger Straße 50
72141 Walddorfhäslach
Tel. +49 7127 8101-02
Fax +49 7127 8101-48

GB

9 Glaisdale Point
Off Glaisdale Drive, Bilborough
Nottingham NG8 4GP
Tel. +44 115 9854288
Fax +44 115 9854211