

PRODUCT SHORT DESCRIPTION:

Eco friendly tripod easel made from recycled materials

FEATURES AND BENEFITS:

- Best performance dry erase surface ideal for normal use
- Durable and lightweight
- Adjustable height
- Available in A1 and Euro size variations
- 80% aluminium post-consumer and post-industrial waste material
- Contains 47,5% pre-consumer recycled material

PRODUCT IMAGE:



80% aluminium
post-consumer and post-industrial waste material

Contains **47.5%** pre-consumer recycled material

MARKETING COPY:

Giving preference to recycled and recyclable materials in its manufacture, Bi-Office Earth-It! products combine fine quality with a responsive approach on the environmental issues our planet is now facing. In our pursuit for excellence we match our office and communication solutions with the highest standards in sustainable development.

Adding portability to efficiency we came up with state of the art easels for professional presentations. From the most sophisticated to the simplest solutions, Bi-Office quality guarantees convenience and versatility in all its transportable presentation boards. Dynamic enterprises can boost efficiency and manage space according to the needs of the moment.

APPLICATION AND SALES PROPOSITION:

- Ecological product offering

TARGET MARKET:

CHANNEL: Office products wholesalers, office products stores, decoration products wholesalers, decoration stores and other retailers

END USERS: conference centers, hotels, companies and organizations in general

ADDITIONAL NOTES:

Other information supports: our official websites, Youtube®, Facebook®, catalogue and online catalogue, demo videos and more.

PROMOTIONAL TIPS:

No specific timing, thus we recommend the occasional promotion like product and offering of cleaning kits or markers

RANGING TABLE:

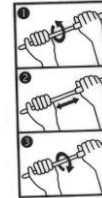
Frame/Colour:	Surface/Colour:	Product Size:	Packed mm	N.W. kg	G.W. kg	Reference:	RRP:
Aluminium	Melamine	600x850 (A1)	1100x755x95	7,00	9,5	EA4676995	---
Aluminium	Lacquered steel	600x850 (A1)	1100x755x95	7,20	9,70	EA4606995	---
Aluminium	Melamine w/ arms	600x850 (A1)	1100x755x95	7,20	9,70	EA4676996	---
Aluminium	Lacquered steel w/ arms	600x850 (A1)	1100x755x95	7,40	9,90	EA4606996	---
Aluminium	Melamine	700x1000 (Euro)	1215x880x95	7,50	10,00	EA2376995	---
Aluminium	Lacquered steel	700x1000 (Euro)	1215x880x95	7,70	10,20	EA2306995	---

RANGING TABLE:

Frame/Colour:	Surface/Colour:	Product Size:	Packed mm	N.W. kg	G.W. kg	Reference:	RRP:
Aluminium	Melamine w/ arms	700x1000 (Euro)	1215x880x95	7,70	10,20	EA2376996	---
Aluminium	Lacquered steel w/ arms	700x1000 (Euro)	1215x880x95	7,90	10,40	EA2306996	---

TECHNICAL DETAILS**COMPOSITION:**

- Aluminium frame
- Wooden based core with lacquered steel or melamine surface
- Pen tray
- 2 year warranty

ASSEMBLY OVERVIEW:**CERTIFICATION AND LEGISLATION:**

n/a

ILLUSTRATION:

n/a

SUGGESTED ADVERT:

Earth-It Tripod Easel

Eco friendly tripod easel made from recycled materials

- Best performance dry erase surface ideal for normal use
- Durable and lightweight
- Adjustable height
- Available in A1 and Euro size variations
- 80% aluminium post-consumer and post-industrial waste material
- Contains 47,5% pre-consumer recycled material



80% aluminium
post-consumer and
post-industrial waste
material

Contains
47.5%
pre-consumer
recycled material

WITHIN FAMILY:

- Earth-It Revolving Board
- Earth-It Mobile Easel

QR CODE:

Author: Ana Oliveira

Approval:

Revision: 02
Date: 17-06-2015