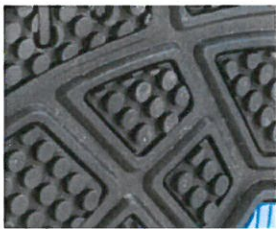


PRODUCT DATA SHEET

Article No. 64.282.0 - Fuse Motion Blue Wns Low S1P HRO SRC



Protection: steel cap
Plus: cushioning IQ.Cell integrated in the heel area, DGVU 112-191
Upper: breathable textile with FUSE.TEC® TPU elements
Lining: BreathActive functional lining
Footbed: evercushion® MISS
Sole: rubber sole MISS SAFETY MOTION with Torsion Control System, 300°C heat resistant
Sizes / Width: 35 - 42 / F



Rubber Outsole

This 300°C heat resistant HRO rubber sole is inspired by the latest running technology. The sole profile ensures a perfect flexibility and a secure contact to the ground.



FUSE.TEC®

Thanks to FUSE.TEC® we can avoid using thick and uncomfortable stitching in the flex-zones of the shoe. It's not just about more comfort, it also provides great durability.



IQ.CELL

The gel pad directly embedded in the heel area works just like a trampoline - it absorbs shock energy and returns it immediately as bounce.



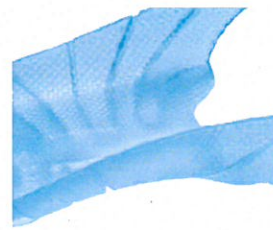
EVA Midsole

We injected billions of tiny bubbles in this ultra lightweight midsole for an optimal cushioning and an improved flexing action of the foot.



evercushion® MISS

This anatomically designed lightweight footbed with waffle structure will keep you cool and dry by transmitting moisture away from the foot in wear. The open cells also allow for rapid drying when the shoes are removed.



Torsion Control Element

Our TPU Torsion control system in the waist of the sole provides you with a better support and stability.