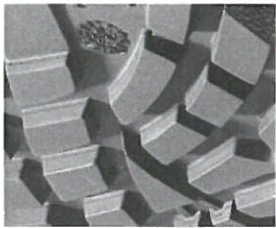


PRODUCT DATA SHEET

Article No. 63.041.1 - Borneo Black Mid S3 HRO SRC

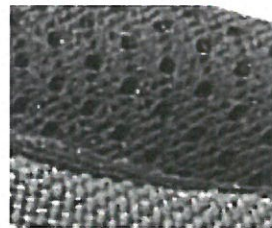


- Protection: CompositeCap and steel midsole
- Plus: collar and dust tongue of suede leather
- Upper: smooth full leather
- Lining: BreathActive functional lining
- Footbed: evercomfort
- Sole: rubber sole SCUFF CAPS with EVER.FLEX decoupling point
300°C heat resistant
- Sizes / Width: 39 - 47 / 11



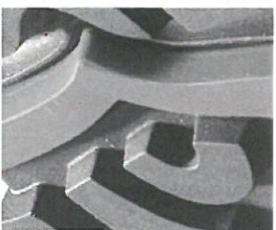
Rubber Outsole

As you can see, the heavy duty pattern of this hard-wearing, up to 300°C heat resistant HRO rubberoutsole has been designed for both optimal security and performance, even in muddy and wet/off-road conditions.



BreathActive

The micro-channel system of this multi-layered lining provides you with a better breathability and moisture management when work means sweat.



Ever.Flex

This decoupling point at your heel eases your foot's life when hitting the ground. The flex action allows the heel to find the best contact position according to the user's weight, size and length of stride.



CompositeCap

Synthetic protective toe cap, lighter than a common steel cap, antimagnetic and thermally insulating.



evercomfort

This ergonomically shaped footbed provides a correct position and an optimum support to the foot. The perforation and the hydrophobic, antibacterial fabric cover improve and balance the foot climate, while a cushioning pad at the heel absorbs the impacts from outside.



Scuff Cap

Over-the-toe extra high scuff cap for wearers who kneel a lot in their job.