

PRODUCT DATA SHEET

Article No. 64.262.0 - Daytona Low S3 HRO SRC



Protection: CompositeCap and flexible FAP® midsole

Plus: DGUV 112-191

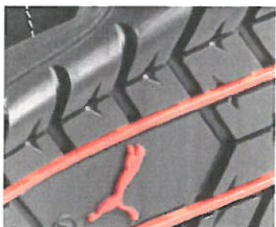
Upper: smooth full leather

Lining: BreathActive functional lining

Footbed: evercushion® plus

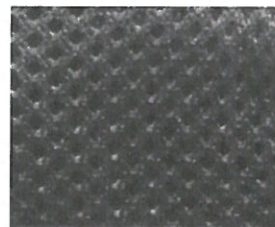
Sole: rubber sole MOTO with iCELL, 300°C heat resistant

Sizes / Width: 37 - 47 / 11



Rubber Outsole Moto

This ultra-robust, 300°C heat resistant rubber outsole is obviously inspired by pure racing. Like the profile of a tyre this sole's diagonal grooves give you an optimum of fluid dispersal and a secure grip on all grounds.



BreathActive

The micro-channel system of this multi-layered lining provides you with a better breathability and moisture management when work means sweat.



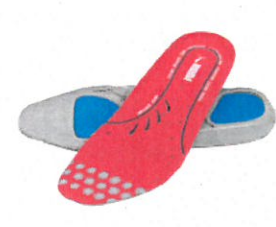
iCELL

The hard-wearing honeycomb structure of the iCELL element improves the cushioning while enhancing the shoe's stability, guidance and comfort.



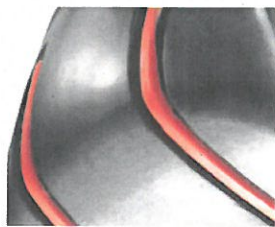
PU Midsole

The direct injected lightweight PU midsole provides you with shock absorption across the whole tread.



evercushion® plus

This high performance footbed uses a combination of low density cellular Polyurethane and PORON® to protect the heel and ball of the foot providing superior cushioning and shock absorption. The extra cushioning of PORON® brings long-lasting comfort and performance in a durable material that withstands even the toughest daily wear.



Driver Heel

This rounded heel part enhances your natural motion and improves your comfort.