

## PREMIUM REUSABLE FULL FACE MASK

Alpha Sentinel Full Face Masks are ergonomically designed for optimum protection, comfort and PPE compatibility.

### FEATURES & BENEFITS

- ✓ The 5 point adjustable head harness removes the feeling of a downward pull ensuring a balanced comfortable fit
- ✓ Well-balanced, light weight. (600g)
- ✓ Available in 3 sizes for a more tailored fit, increasing respirator/fit factor
- ✓ Raised visor bridge profile protects the visor from scratches when not in use
- ✓ Visor and filter position provides panoramic field of view without any obstructions
- ✓ Low profile shape provides exceptional compatibility with other PPE
- ✓ The Sentinel filters are fitted with a simple connection which easily click into position
- ✓ The large exhalation valve reduces heat and moisture build up, providing low breathing resistance
- ✓ Easily cleaned and maintained with spare parts available
- ✓ Tested to EN136:1998 Class 2 ensuring greater robustness and higher flame retardancy
- ✓ Supplied with user seal check covers, which double as particulate filter holder for combination filter
- ✓ Optical insert available
- ✓ Quantitative face fit adapter available
- ✓ The harness is designed to prevent over-rotation and tangling



**MADE IN  
THE UK**

### MAINTENANCE

- **WARNING: Replace all damaged parts immediately to ensure correct level of protection**
- This should be regularly checked and serviced by a trained specialist
- Inspection and service records must be maintained for each mask
- Genuine or original manufacturer parts should only be used
- Changes to the product or its components are not permitted and will result in loss of approval
- To replace the exhalation valve, access the exhalation valve cavity by sliding the exhale valve cover downwards. Remove the orange exhale valve and replace it with a new part. Refit exhale cover
- To replace inhale valves, remove both flat orange inhalation valves from the inside of the mask and refit new parts ensuring they are correctly seated and flat
- To avoid confusion, the exhalation valve is stepped and larger than the two flat inhalation valves
- Carry out a leak tightness test

### CERTIFICATION

**EN 140:1998**



### ORDERING INFORMATION

<b>SMALL:</b>	ASRAS0002BD
<b>MEDIUM:</b>	ASRAS0002BF
<b>LARGE:</b>	ASRAS0002BH

### MATERIAL

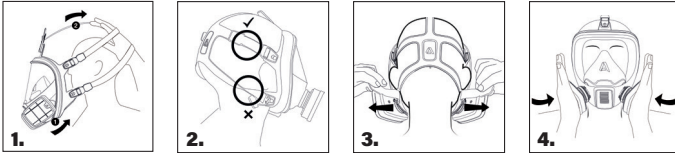
<b>FACEPIECE:</b>	TPE
<b>FRONT COVER:</b>	ABS
<b>HEAD HARNESS:</b>	EPDM RUBBER
<b>HARNESS BUCKLE:</b>	NYLON
<b>EXHALATION VALVE:</b>	SILICONE
<b>INHALATION VALVE:</b>	SILICONE
<b>VISOR:</b>	POLYCARBONATE
<b>BEZEL:</b>	PTB
<b>EXHALATION COVER:</b>	ABS
<b>TEST COVER:</b>	POLYPROPYLENE

## SELECTION AND FITTING INSTRUCTIONS

### DONNING

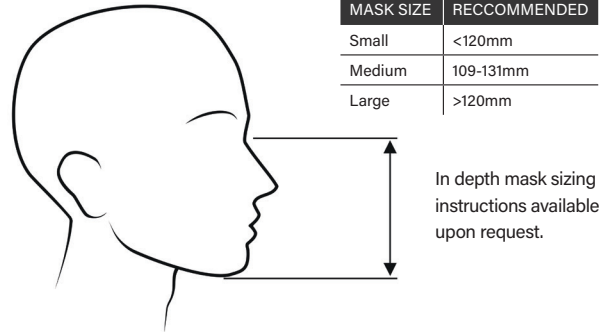
**WARNING: In order to guarantee a proper fit. For those wearing corrective spectacles, the Alpha Solway Spectacle kit must be fitted as normal glasses cannot be worn under the mask.**

1. Select the Appropriately sized mask. [See Size Guide].
2. Slacken the head harness straps. Move the head harness upwards and spread with both hands, place your chin in the facepiece and pull the head harness over your head [fig 1].
3. Ensure head harness is sitting correctly and not twisted [fig 2].
4. Tension the straps in pairs by pulling the free strap ends towards the rear of the head [fig 3].
5. Adjust the fit of the mask on your face, so that it fits firmly but comfortably.
6. Perform a user seal check and readjust if required [fig 4].



### SIZE GUIDE

Select the appropriately sized mask by measuring the distance between the top of the nose and the chin.



**WARNING: A proper fit check must be successfully completed each time the respirator is worn. Failure to achieve a proper face-to-respirator seal before you enter a hazardous atmosphere may result in little or no respiratory protection.**

## SUITABLE APPLICATIONS

FILTER	TYPE OF FILTER	STANDARD	APF**	HAZARD	INDUSTRY	
ASRAS0003BF	P3 Filters - Standard Size	EN 143:2000 + A1 2006 P3 R	20xWEL* HALF MASK 40xWEL* FULL FACE MASK	Protects from non-toxic dusts and oil/water based particulates	Agriculture Laboratory and Disease Control Pharmaceutical Industry Welding work Woodworking Underground Civil Engineering	Mining Manufacture of Batteries (Ni-Cad) Disposal of Toxic Waste Cutting and Casting of Metals Craft Work Construction
ASRAS0003BH	P3 Filters - High Capacity	EN 143:2000 + A1 2006 P3 R	20xWEL* HALF MASK 40xWEL* FULL FACE MASK			
ASRAS0005BZ	A1 Filters	EN 14387:2021	10xWEL* HALF MASK 20xWEL* FULL FACE MASK	Protects from organic vapours	Paint and Varnish Manufacture Welding Agriculture Transportation	Automotive Ink & Dye Manufacture Aerospace Petrochemical refining
ASRAS0006BZ	A2 Filters	EN 14387:2021	10xWEL* HALF MASK 20xWEL* FULL FACE MASK			
ASRAS0007BZ	ABEK1 Filters	EN 14387:2021	10xWEL* HALF MASK 20xWEL* FULL FACE MASK	Protects from organic vapours, inorganic, acid gases, ammonia & ammoniacal derivatives	All of the above plus: Electrolytic processes	Acid Cleaning Refrigeration
ASRAS0004BZ	P3P Filters	EN 14387:2021	Combine with any gas & vapor filter - see above for assigned protection			

\* WEL - Workplace Exposure Limit, \*\*Assigned Protection Factor (HSG53 HSE Guide) (HSE EH40 Workplace Exposure Limits)

## CERTIFICATION

**Authorised Representative [EU]:** Globus EMEA Ltd., 51 Dawson Street, Dublin, D02 AN25, Ireland. Product conforms to the requirement of: UK Regulation 2016/425 on PPE, brought into UK Law and amended & Regulation (EU) 2016/425 of the European Parliament and of the Council as Personal Protective Equipment (PPE).

**Type-Examination, (Module B), Certificates issued by:** UK - CCQS UK Ltd., Level 2, 5 Harbour Exchange Square, London, E14 9GE, UK. [A.B. No. 1105]. EU - CCQS Certification Services Ltd., Block 1 Blanchardstown Corporate Park, Ballycoolin Road, Blanchardstown, Dublin D155 AKK1, Ireland. [N.B. No. 2834].

**PPE is subject to the conformity assessment procedure, conformity to type based on Quality Assurance of the production process, (Module D), under the surveillance of the Approved/Notified Body(-ies):** UK - SGS UK Ltd., Rossmore Business Park, Ellesmere Port, Cheshire, CH65 3EN, UK. [A.B. No. 0120]. EU - SGS Fimko Oy, Takomtie 8, FI-00380, Helsinki, Finland. [N.B. No. 0598].