

# DECLARATION OF CONFORMITY

We,

Impacto Protective Products Inc.  
P.O. Box 524, 40 Dussek  
Belleville, ON K8N 5B2 Canada  
Phone: (613) 966-0062 Fax: (613) 966-0067

Declare under our sole responsibility that the product

501-00, 502-10, 714-20

To which this declaration relates is in conformity with the following document

Specification List

Following the provisions of

89/686/EEC (Council Directive)  
89/686/EEC Personal Equipment Annex II Health and  
Safety requirements  
EN420  
EN388

The technical Construction File is maintained at the following addresses:

- |  |   |
|--|---|
| 1. Impacto Protective Products Inc.<br>40 Dussek St., P.O. Box 524<br>Belleville, ON K8N 5B2<br>Canada | 2. Merchandise Testing Laboratories<br>Oak Hurst House<br>Ashbourne Road<br>Derby, DE22 3FS |
| Tel 0613 9660 062  |   |
| Fax 0613 9660 067  |   |
| UK free phone 0800 0280 243  |   |
| Email <a href="mailto:impacto@2protect.com">impacto@2protect.com</a>                                   |   |
| Contact Mr. Eric Lehtinen  |   |

Authorized Signatory



Date 23-Oct-07

Name:

E. M. Lehtinen

Position:

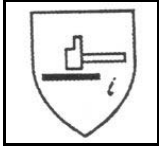
Managing Director  
Impacto Protective Products Inc.

**INTERMEDIATE DESIGN**

**Type** 501-00

**Description:** **IMPACTO** FINGERLESS FOUR WAY STRETCH POLYCOTTON LYCRA GLOVE WITH VISCO-ELASTIC (VEP) PALM PAD.

**Style Identification:** **Type** 501-00



These gloves comply with the requirements of Directive 89/686/EEC and the standard(s) referenced below.

BS EN420 - Protective gloves. General requirements and test methods

BS EN388 – Protective gloves against mechanical risks. The first number identifies the performance level for abrasion resistance. The second, the blade cut resistance; the third, the tear resistance and the fourth, the puncture resistance.

2	5	2	1
---	---	---	---

Numbers equal performance level, Lowest = \_\_, Highest = \_\_ except Blade Cut = \_\_

**Details of Materials:**

Visco-elastic details on attached page.

Polycotton/lycra - Polyester 46% - Cotton 46% - Lycra 8%. 110% x 130% elongations. 200 g/m<sup>2</sup>. width 153 cm - 158 cm. Circular knit fabric. Royal Blue

Thread - Blue 100% polyester

**Fitting Instructions:**

Insert hand through opening at wrist, fit thumb in thumb hole and fingers through finger holes. Position the VEP pad on the palm of the hand.

Glove Size	Fits hand Size	Hand Measurements	
		Circumference (mm)	Length
X - Small	6	152 - 177	160 – 170
Small	7	178 – 202	171 - 181
Medium	8	203 – 228	182 – 191
Large	9	229 – 253	192 - 203
X-Large	10	254 - 278	204 - 214
XX-Large	11	279	215

The length of this Impacto Glove varies from the common length because it does not have full fingers

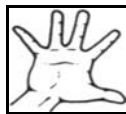
**Washing Instructions:**

Hand wash with lukewarm water and mild detergent. Do not use bleach or strong detergent. Hang or lay flat, air dry. Do not dry in automatic dryer. Please Note: frequent washing of leather products will make the leather less supple.

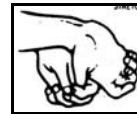
**Exercises:**



Wrist Curl



Finger Stretch



Thumb Stretch

**Limitations of Use:**

These products are physiological aids. It is important to wear the correct size and comfortably fastened at all times.

**After Care:**

Follow manufacturers recommendations for washing and cleaning. To ensure optimum protection, regular comparisons are recommended against a new product. The company will not accept liability for product, whose use and care advice has been ignored.

These garments bear CE Marking to demonstrate compliance with EC Directive EC/686/89 Personal Equipment Annex II Health and Safety requirements

**EEC Contact**

Mr. Eric Lehtinen  
Regus House, Herald Pegasus Business Park  
Castle Donington DE74 2TZ UK  
Tel 0800 0280 243 Fax 01332 638 204

For further information contact:

Impacto Protective Products  
P.O. Box 524, Belleville, Ontario,  
Canada, K8N 5B2  
or you nearest authorised dealer.

**Notified Body #0319**

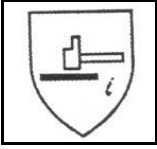
Merchandise Testing Laboratories  
Oak Hurst House  
57 Ashbourne Road  
Derby, DE22 3FS

## INTERMEDIATE DESIGN

**Type** 502-10

**Description:** IMPACTO FINGERLESS NYLON LYCRA GLOVE WITH PEARL SUEDE LEATHER AND VISCO ELASTIC (VEP) PADDING IN THE PALM AND THE THUMB WEB AREA.

**Style Identification:** **Type** 502-10



These gloves comply with the requirements of Directive 89/686/EEC and the standard(s) referenced below.

BS EN420 - Protective gloves. General requirements and test methods

BS EN388 – Protective gloves against mechanical risks. The first number identifies the performance level for abrasion resistance. The second, the blade cut resistance; the third, the tear resistance and the fourth, the puncture resistance.

4	1	4	4
---	---	---	---

Numbers equal performance level, Lowest = \_\_, Highest = \_\_ except Blade Cut = \_\_

### Details of Materials:

Visco-elastic details on attached page.

Nylon/Lycra - Nylon 80% , Lycra 20%. Width 160 cm - 165 cm. 185 g/m<sup>2</sup>. 200% x 70% elongation.  
Warp knit raschel fabric. Navy.

Leather – cow - Pearl suede

Thread - blue 100% polyester

### Fitting Instructions:

Insert hand through opening at wrist, fit thumb and fingers into the corresponding thumb and finger holes of the glove. Position the large VEP pad on the palm of the hand. Small VEP pad on the back of the hand in the thumb web area. Glove sizes are as detailed below and are not as specified in EN420:1994 table 2. This ensures close fitting to maximize comfort and performance.

Glove Size	Fits hand Size	Hand Measurements	
		Circumference (mm)	Length
X - Small	6	152 - 177	160 – 170
Small	7	178 – 202	171 - 181
Medium	8	203 – 228	182 – 191
Large	9	229 – 253	192 - 203
X-Large	10	254 - 278	204 - 214
XX-Large	11	279	215

The length of the Impacto Glove varies from the common length because it does not have fingers.

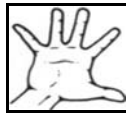
### Washing Instructions:

Hand wash with lukewarm water and mild detergent. Do not use bleach or strong detergent. Hang or lay flat, air dry. Do not dry in automatic dryer. Please Note: frequent washing of leather products will make the leather less supple.

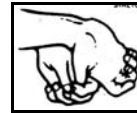
### Exercises:



Wrist Curl



Finger Stretch



Thumb Stretch

### Limitations of Use:

These products are physiological aids. It is important to wear the correct size and comfortably fastened at all times. These gloves are meant for protection only to the palm area of the hand.

### After Care:

Follow manufacturers recommendations for washing and cleaning. To ensure optimum protection, regular comparisons are recommended against a new product. The company will not accept liability for product, whose use and care advice has been ignored.

These garments bear CE Marking to demonstrate compliance with EC Directive EC/686/89 Personal Equipment Annex II Health and Safety requirements

### EEC Contact

Mr. Eric Lehtinen  
Regus House, Herald Pegasus Business Park  
Castle Donington DE74 2TZ UK  
Tel 0800 0280 243 Fax 01332 638 204

For further information contact:  
Impacto Protective Products  
P.O. Box 524, Belleville, Ontario,  
Canada, K8N 5B2  
or you nearest authorised dealer.

### Notified Body #0319

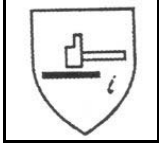
Merchandise Testing Laboratories  
Oak Hurst House  
57 Ashbourne Road  
Derby, DE22 3FS

## INTERMEDIATE DESIGN

**Type** 714-20

**Description:** **IMPACTO FINGERLESS POLYCOTTON LYCRA GLOVE LINER WITH WRIST RESTRAINER. VISCO-ELASTIC POLYMER (VEP) PADDING IN THE PALM AND THUMB WEB AREA. DETACHABLE GRAIN LEATHER WRIST SUPPORT.**

**Style Identification:** **Type** 714-20



These gloves comply with the requirements of Directive 89/686/EEC and the standard(s) referenced below.

BS EN420 - Protective gloves. General requirements and test methods

BS EN388 – Protective gloves against mechanical risks. The first number identifies the performance level for abrasion resistance. The second, the blade cut resistance; the third, the tear resistance and the fourth, the puncture resistance.

2	5	2	1
---	---	---	---

Numbers equal performance level, Lowest = \_\_, Highest = \_\_ except Blade Cut = \_\_

### **Details of Materials:**

Visco-elastic details on attached page.

Polycotton/lycra - Polyester 46% - Cotton 46% - Lycra 8%. 110% x 130% elongations. 200 g/m<sup>2</sup>. width 153 cm - 158 cm. Circular knit fabric. Royal Blue

Leather - cow

Thread - blue 100% polyester

Hook and Loop - 100% Nylon

### **Fitting Instructions:**

Insert hand through opening at wrist. Insert thumb and fingers into the corresponding thumb and fingers holes of the glove. Position the large VEP pad on the palm of the hand. Comfortably wrap the wrist support around wrist and fasten hook and loop closure.

Glove Size	Fits hand Size	Hand Measurements Circumference (mm)	Length
X - Small	6	152 - 177	160 – 170
Small	7	178 – 202	171 - 181
Medium	8	203 – 228	182 – 191
Large	9	229 – 253	192 - 203
X-Large	10	254 - 278	204 - 214
XX-Large	11	279	215

The length of this Impacto Glove varies from the common length because it does not have full fingers and it is extended to accommodate the wrist support.

### **Washing Instructions:**

Hand wash with lukewarm water and mild detergent. Do not use bleach or strong detergent. Hang or lay flat, air dry. Do not dry in automatic dryer. Please Note: frequent washing of leather products will make the leather less supple.

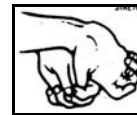
### **Exercises:**



Wrist Curl



Finger Stretch



Thumb Stretch

### **Limitations of Use:**

These products are physiological aids. It is important to wear the correct size and comfortably fastened at all times.

### **After Care:**

Follow manufacturers recommendations for washing and cleaning. To ensure optimum protection, regular comparisons are recommended against a new product. The company will not accept liability for product, whose use and care advice has been ignored.

These garments bear CE Marking to demonstrate compliance with EC Directive EC/686/89 Personal Equipment Annex II Health and Safety requirements

### **EEC Contact**

Mr. Eric Lehtinen  
Regus House, Herald Pegasus Business Park  
Castle Donington DE74 2TZ UK  
Tel 0800 0280 243 Fax 01332 638 204

For further information contact:  
Impacto Protective Products  
P.O. Box 524, Belleville, Ontario,  
Canada, K8N 5B2  
or you nearest authorised dealer.

### **Notified Body #0319**

Merchandise Testing Laboratories  
Oak Hurst House  
57 Ashbourne Road  
Derby, DE22 3FS