

TRIPAL INTERNATIONAL LTD FOOTWEAR SPECIFICATION

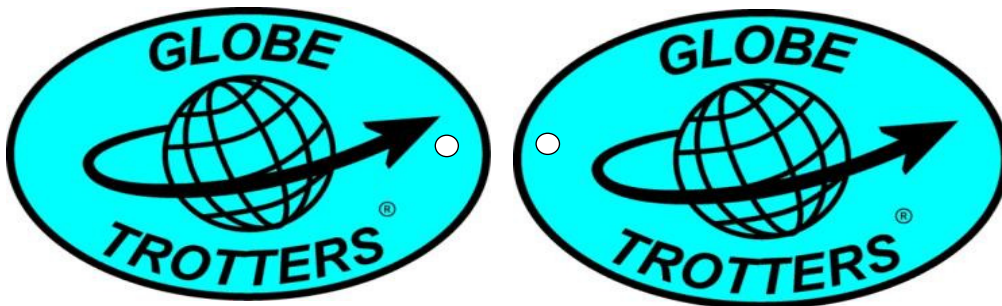
Description:	LH313SM-N	Code:	I
Drafted by:	LP	Version:	1
production at	Saina	Group reference:	PGW
		Issue date:	07/01/2009

Upper	Smooth tan action leather S3
Tongue	
Collar	bound top line with PU fabric
Lining – Quarter	Tan fake fur lining plus split suede counter linings
Lining – Vamp	Grey/white non-woven
Eyelets	
Sole - midsole	Low density PU brown (Darker than pictured see CFM sample)
Sole - Outsole	High density PU Black Sole pattern Globetrotter 5090401
Insole	Biagioli 252A
footbed	Full length with black fabric punched and stitched
Trim	Padded ankle lined with KPL heat embossed fabric plus PVC heel kicker
Sizes and fit	6-14UK
Construction	Strobel stitched and injection moulded
Upper design	rigger boot
Fastening details	
Toe caps	Sanasi AN1 steel toe cap
Protective midsole	Stainless spring steel 0785
Stitching details	Twin line Tan 20S
Sole adhesion	Direct Injection moulded
Laces	
Stiffener	Non-woven
Last	
Protection category	S3 CI SRC
Standard	ENISO 20345:2004 A1:2007
External tongue label	
CE marking	CE marking Label stitched to inside of shaft 30mm down from top line.
Sock marking	Printed with logo plus size
Quarter tag	
user instructions	User instructions, A4 back to back supplied in separate documents
Packaging	Shoes stuffed with tissue, fully laced and each shoe individually wrapped in tissue, Silica gel sachet Plus toe band
Special instructions	




Swing ticket same both sides. Hung from top eyelet of right foot

CE MARKING LABELS



ENISO	20345:	2004 A1:2007	S3 CI SRC	LH313SM-N	PGW.08/09	TZ	P/O:1324	CE
-------	--------	--------------	-----------	-----------	-----------	----	----------	----

**LH SAFETY LTD**  
**STYLE LH313SM-N**  
**8 PAIRS**  
**SIZE 8/42**  
**CARTON NUMBER 0256**  
**DIM: 105 x 85 x 90cm**  
**WEIGHT: 22.5kg**

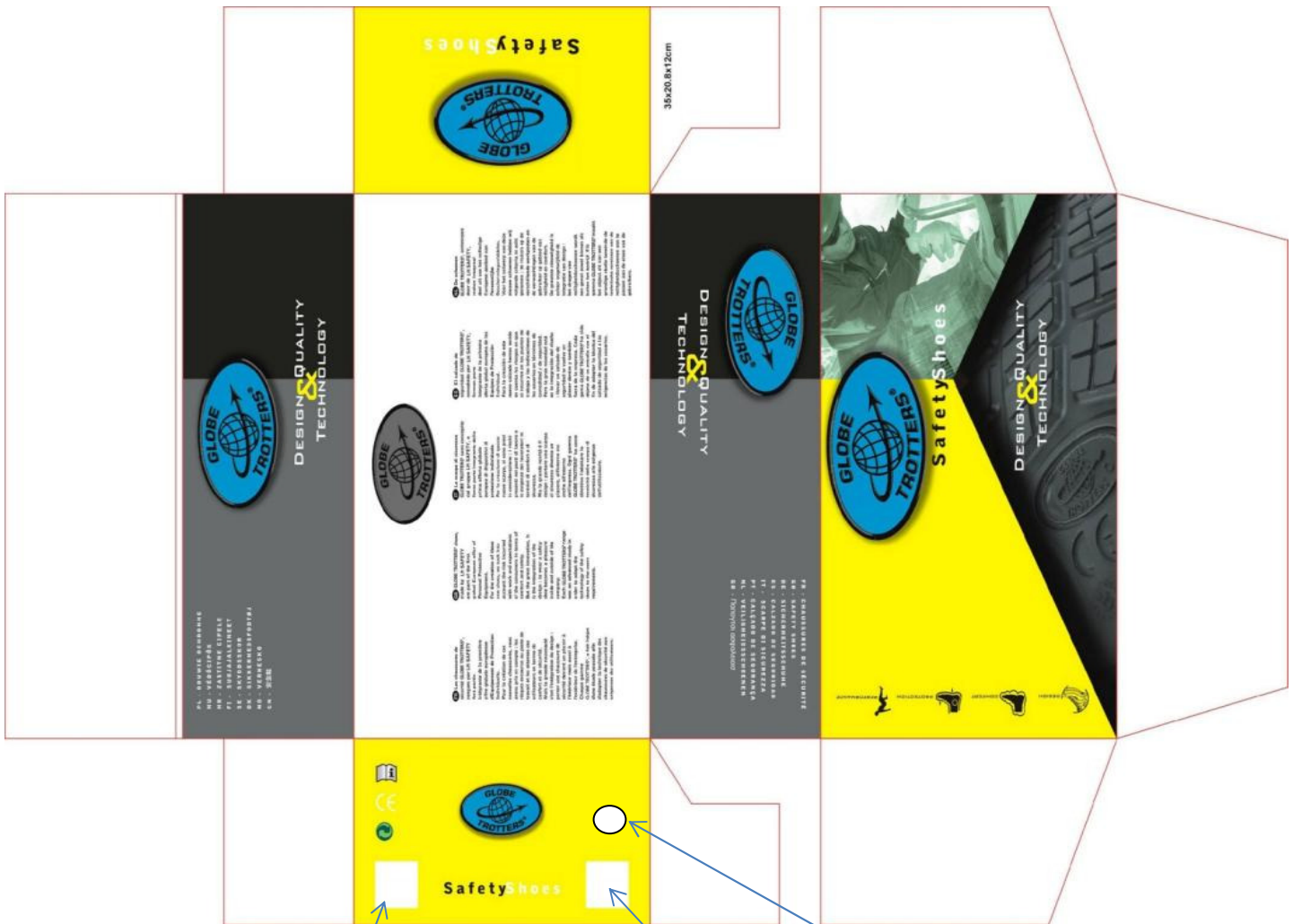



**LH SAFETY LTD**  
 Greenbridge, Rawtenstall,  
 Lancashire, BB4 7NX

BOTH CARTON ENDS

BOTH CARTON SIDES

TOEBAND



**LH313SM-N**  
**S3 CI SRC 9/43**  
**EN ISO 20345**




**LH313SM-N**  
**S3 CI SRC**

9  
 —  
 43

- LH313SM-N size 6 pairs per carton 8 Bar code number 8 5 0 5 1 1 9 6 0 0 3 7 7 2
- LH313SM-N size 7 pairs per carton 8 Bar code number 8 5 0 5 1 1 9 6 0 0 3 7 8 9
- LH313SM-N size 8 pairs per carton 8 Bar code number 8 5 0 5 1 1 9 6 0 0 3 7 9 6
- LH313SM-N size 9 pairs per carton 8 Bar code number 8 5 0 5 1 1 9 6 0 0 3 8 0 2
- LH313SM-N size 10 pairs per carton 8 Bar code number 8 5 0 5 1 1 9 6 0 0 3 8 1 9
- LH313SM-N size 11 pairs per carton 8 Bar code number 8 5 0 5 1 1 9 6 0 0 3 8 2 6

LH313SM-N size 11 pairs per carton 8 Bar code number 8 5 0 5 1 1 9 6 0 0 3 8 2 6

LH313SM-N size 12 pairs per carton 8 Bar code number 8 5 0 5 1 1 9 6 0 0 3 8 3 3

LH313SM-N size 13 pairs per carton 8 Bar code number 8 5 0 5 1 1 9 6 0 0 3 8 4 0

LH313SM-N size 14 pairs per carton 8 Bar code number 8 5 0 5 1 1 9 6 0 1 2 6 9 9

