

Instructions For Use

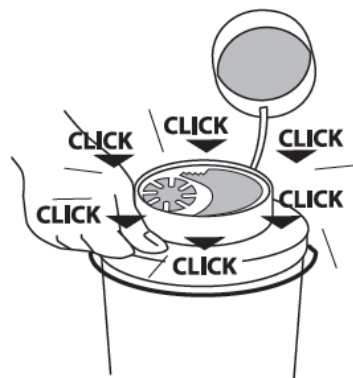
Mini Series 0,5-1L

English version
REV 00/2018



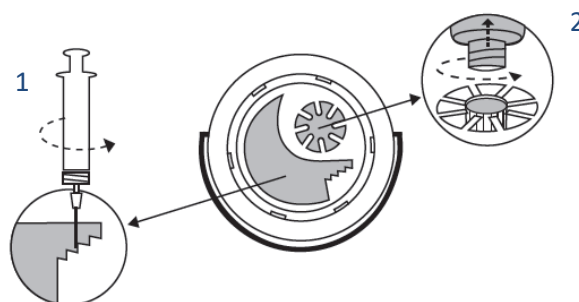
Assembly Instruction

1. Place lid onto a container and press down on lid until six clicks.



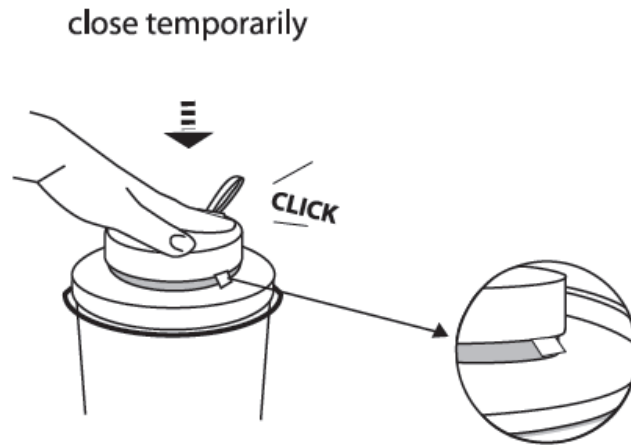
Usage instruction

1. Luer lock
2. Insulin pen

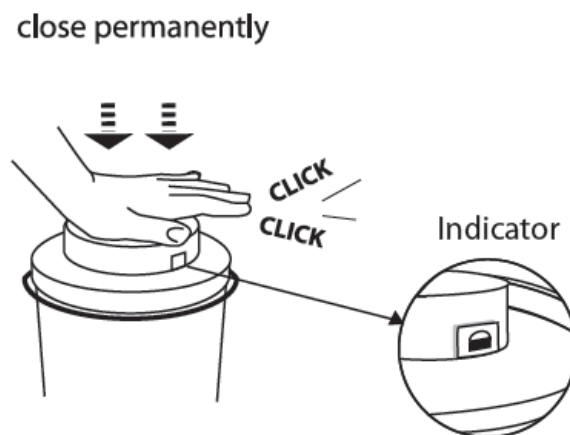


Closure instruction

- 1. Temporary closing:**
Press down on small lid until one click.







- 2. Permanent closing:**
Press down on small lid until two clicks. Indicator appears.



Accessories

| | | | |
|--|--|---|---|
|  |  |  |  |
| <p>Descripton: Tray large with bayonet grip 350x250x40 mm Material: ABS</p> | <p>Descripton: Tray small with bayonet grip 300x150x40 mm Material: ABS</p> | <p>Descripton: Frame, wall bracket, Stainless steel</p> | <p>Descripton: Hang bracket, Stainless steel</p> |
| <p>Order Units: 1 pcs</p> | <p>Order Units: 1 pcs</p> | <p>Order Units: 1 pcs</p> | <p>Order Unit: 1 pcs (frame & bracket)</p> |
| <p>Article No: 6255-6276</p> | <p>Article No: 6255-6266</p> | <p>Article No: 6281-00</p> | <p>Article No: 6281-01</p> |

| | | | |
|---|---|---|---|
|  |  |  |  |
| <p>Descripton: Trolley bracket, Stainless steel</p> | <p>Descripton: Table mount with screws, Glass filled PC</p> | <p>Descripton: Table mount vacuum adapter, glass filled PC and PVC</p> | <p>Descripton: Wall bracket/Trolley bracket, stainless steel</p> |
| <p>Order Units: 1 pcs (frame & bracket)</p> | <p>Order Units: 1 pcs</p> | <p>Order Units: 1 pcs</p> | <p>Order Unit: 1 pcs</p> |
| <p>Article No: 6281-02</p> | <p>Article No: 6255-6272</p> | <p>Article No: 6255-6254</p> | <p>Article No: 6250/6250-6260</p> |

Other

All data refer to typical single values and may be subject to alterations.
Copyright © AB Sundplast

www.safebox.eu
www.sundplast.com

AB Sundplast
Box 15084
25015 Helsingborg
Sweden