

DYMO[®]



M5 | M10

Digital USB Postal Scale User Guide

Guide d'utilisation du Pèse Lettre USB numérique

Gebruikershandleiding- Digitale USB postweegschaal

Bedienungsanleitung -Digitale USB-Paketwaage

Guía del usuario de la báscula postal digital USB

Guia do Utilizador- Balança Postal Digital USB

Bilancia postale digitale con connessione USB - Guida per l'utente

Digital USB postvægt - brugervejledning

Bruksanvisning för digitala brevåg med USB

Digital USB Postal Scale-kirjevaaka - Käyttöopas

Brukerhåndbok, digital USB-postvekt

Instrukcja użytkownika cyfrowej wagi pocztowej z gniazdem USB

Návod k použití digitální USB poštovní váhy

Dijital USB Bağlantılı Posta Terazisi Kullanım Kılavuzu

Digitális USB postai mérleg használati útmutató

Návod na obsluhu digitálnej poštovej váhy s USB pripojením

DYMO® Digital USB Postal Scale

This User Guide provides instructions for using your DYMO® Digital USB Postal Scale. Visit www.dymo.com/register to register your scale.

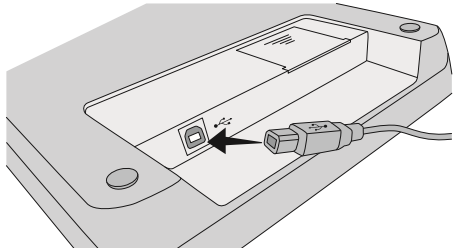
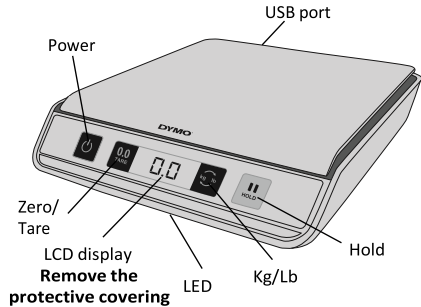
Setting Up the Scale

The scale is powered through a USB port on your computer. When not connected to your computer, the scale can be powered by three AAA batteries.

To set up the scale

1. Unpack the scale.
2. Set the scale on a firm, flat surface.
3. Remove the protective covering from the LCD display.
4. Plug the USB cable into the USB port on the back of the scale.
5. Plug the USB cable into an available USB port on your computer.

The scale is automatically recognized by your computer when the power is turned on.

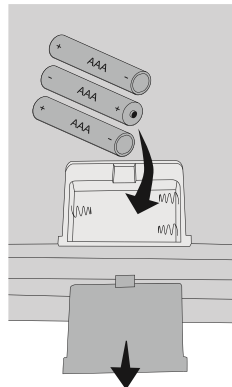


⚠ When connecting the scale through a USB hub, always use a powered hub. **Inserting the Batteries**

When not connected to your computer, the scale can be powered by three AAA alkaline batteries. The scale automatically turns off after three minutes of inactivity.

To insert the battery

1. Disconnect the USB cable from the computer or USB hub.
2. Turn the scale over.
3. Remove the battery compartment cover.
4. Insert three AAA batteries as shown. **!** Make sure to insert the batteries correctly. Inserting the batteries backwards can damage the scale.
5. Replace battery compartment cover.




! Remove the batteries if the scale will not be used for a long period of time.

Turning On the Power


The scale has an Auto Shut Off feature which automatically turns off the scale after three minutes of inactivity.

To turn the scale on

- Press  on the front of the scale.

When the scale is first turned on, wait a few seconds for the scale to stabilize before weighing items. The display shows **0 g**, **0.0 oz**, or **0.00 oz** when ready.

To turn the scale off

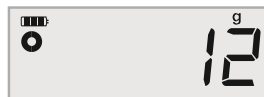
- Press  on the front of the scale to turn the scale off.

The scale turns off automatically after three minutes of inactivity.

Using the Scale

Always wait for **0 g**, **0.0 oz**, or **0.00 oz** to display before placing an item on the scale platform.

After placing an item on the scale, wait for several seconds for the weight to appear. When the scale is ready, a **o** appears to the left of the weight.



To weigh an item

- Place an item on the scale platform.

Free DYMO Scale Software



Display the scale weight on your Mac® or PC screen.

Download the DYMO Scale software: www.dymo.com/scalesoftware

Using the Tare Feature

You can weigh small items or items that cannot be easily placed on the scale platform by placing the items in a container and using the Tare/Zero button to eliminate the weight of the container.

To use the tare feature

1. Place an empty container on the platform.
2. When the scale is ready, press .
The display is set to zero.
3. Place the items to be weighed in the container.
The display shows the weight of the items, without the weight of the container.
4. After removing the container, press  to reset the scale to zero.

Using the Hold Feature

When an item being weighed extends over the front of the scale and you cannot see the display, you can freeze the display so that the weight is still displayed after removing the item.

To use the Hold feature 1.

Press .


The LED flashes and the display shows **HOLD**, and then **0 g**, **0.0 oz**, or **0.00 oz** when ready.

2. Place the item on the scale.
After a few seconds, the LED stops flashing and stays illuminated.
3. Remove the item from the scale.
The LED stays illuminated and the weight continues to be displayed for about ten seconds.

Changing the Units of Measure

Your scale can display weight in English (pounds) or metric (kilograms) units. The default unit of measure is metric. Each time you turn on the scale, the scale defaults to the unit of measure that was last used.

To change the units of measure

□ Press  to toggle between English and metric units. **Caring**

for the Scale

With proper care and handling, your scale will give you years of service. Keep the following in mind when using your scale:

- Your scale works best when operated and stored at normal room temperature. Avoid lengthy exposure to extreme heat or cold.
- Only operate the scale on a stable, vibration free surface.
- Exposure to dust, dirt, moisture, vibration, and air currents; and proximity to other electronic equipment can affect the reliability and accuracy of your scale.
- Using the scale in proximity to wireless devices, such as mobile phones, can cause the scale display to fluctuate when the device is in use.
- Although this scale is designed to be quite durable, gently place items to be weighed on the platform. Avoid rough treatment, as this may permanently damage the internal sensor and void your warranty.
- You can permanently damage the scale by placing significantly overweight items on the scale platform.
- Avoid shaking, dropping, or otherwise shocking the scale. This is a precision instrument and **MUST BE HANDLED WITH EXTREME CARE**.
- The scale has been calibrated at the factory and will not need to be calibrated again.

Technical Specifications NOT

LEGAL FOR TRADE

Model	M5	M10
Capacity	4 g → 5 kg (0.2 oz → 11 Pounds)	4 g → 10 kg (0.2 oz → 22 Pounds)
Weight Increments	2 g (0.1 oz)	2 g (0.1 oz)
Accuracy		
Under half the capacity	±6 g	±6 g
Over half the capacity	±12 g	±12 g
Units	kg/g (lb/oz)	kg/g (lb/oz)



Auto Shut Off	After three minutes of inactivity
Operating Temperature	10° - 40° C (50° - 104° F)
Interface	USB 2.0 Low Speed HID Scale Device
Power	USB or 3 AAA alkaline batteries

For information about our other scale products, visit www.dymo.com.

Troubleshooting

Negative number is displayed	A tare value is displayed as a negative number when the items are removed from the scale. Press TARE^{0.0} to reset the scale to zero.
00000 is displayed	The item on the scale platform exceeds the maximum capacity of the scale. Remove the item immediately to prevent damage to the scale.



Problem/Error Message	Solution
No display	Ensure the scale is plugged in, or replace the batteries.
LO is displayed	Replace the batteries.
Display reads 0 g , 0.0 oz , or 0.00 oz with an item on the platform	<p>This can happen because:</p> <ul style="list-style-type: none"> • The Tare/Zero button, TARE^{0.0}, was pressed while an item was on the scale. • Power to the scale was disconnected or turned off and then on again with an item on the scale. <p>In both of these cases, remove the item from the platform and press TARE^{0.0} to return the display to 0 g, 0.0 oz, or 0.00 oz.</p>

If you need further assistance, you can obtain support at www.dymo.com.

Warranty

TWO-YEAR LIMITED WARRANTY

Dymo scales are sold with a two-year warranty from the date of purchase against defects in design, materials and workmanship. If this product is found to be defective within that time, we will promptly repair or replace it at our cost. This warranty does not cover accidental damage, wear and tear or consequential or incidental loss.

WHAT IS COVERED?

This warranty covers this product only and only against defects in design, materials or workmanship. If, after inspection of your returned product, we find that the product is defective in design, materials or workmanship, we shall at no charge to you repair or replace the product at our discretion, and return the product to you. You are responsible for the full cost of shipping the product to Dymo, but there is no charge for the inspection or the return postage.

WHAT IS NOT COVERED?

This warranty does not cover loss of or damage to a computer or other devices connected directly or indirectly to this Dymo product. This warranty also does not cover any loss of or damage to data, programs, records or other information. This warranty does not cover any defect or loss which would not have occurred if instructions in the owner's manual had been followed. This warranty does not cover other incidental or consequential damages even if Dymo has been informed of the possibility of such damages. This warranty is in lieu of all other warranties, express or implied. This warranty gives you specific rights and you may also have other rights, which may vary from state to state or country to country.

HOW TO MAKE A WARRANTY CLAIM

To make a warranty claim, please contact customer support: www.dymoservice.com

2 + 1 Year Warranty - Register

Register now at www.dymo.com/register and extend your limited warranty for one additional year.

It is easy to register online. You will be sent a three-year warranty certificate and benefit from:

1. Technical support
2. Special offers and other interesting information

Electrostatic Discharge Precautions

Electrostatic discharge (Static Electricity or ESD) can cause damage to any electronic device, including the scale. To avoid damage, follow these simple steps:

- Always disconnect the scale from your computer or USB hub when changing the battery.
- Always discharge any accumulated static electricity from yourself before connecting the scale to your computer or USB hub. If your computer uses a three-pin, grounded connector, you can do this by touching the metal case of your computer. As an alternative, try touching a cold water faucet.

Environmental Information

The equipment that you bought has required the extraction and use of natural resources for its production. It may contain hazardous substances for the health and the environment.

In order to avoid the dissemination of those substances in our environment and to diminish the pressure on the natural resources, we encourage you to use the appropriate take-back systems. Those systems will reuse or recycle most of the materials of your end life equipment in a sound way.

The crossed-bin symbol marked in your device invites you to use those systems.



If you need more information on the collection, reuse and recycling systems, please contact your local or regional waste administration. You can also contact us for more information on the environmental performance of our products.

Documentation Feedback

We are constantly working to produce the highest quality documentation for our products. We welcome your feedback. Send us your comments or suggestions about our online Help, printed, or PDF manuals.

Please include the following information with your feedback:

- Product name and version number
- Type of document: printed manual, PDF, or online Help
- Topic title (for online Help) or page number (for printed or PDF manuals)
- Brief description of content (for example, step-by-step instructions that are inaccurate, information that requires clarification, areas where more detail is needed, and so on)
- Suggestions for how to correct or improve the documentation

We also welcome your suggestions for additional topics you would like to see covered in the documentation. Send email feedback to:

documentation@dymo.com

Please keep in mind that this email address is only for documentation feedback. If you have a technical question, please contact Customer Service.

The logo consists of the word "DYMO" in a bold, italicized, sans-serif font, with a registered trademark symbol (®) to its upper right. The text is white and is centered within a solid black rectangular background.

DYMO®

A NewellRubbermaid Brand

Product of / Produit de:
Newell Rubbermaid Europe Sàrl
Chemin de Blandonnet 10
1214 Vernier - Switzerland

Represented in the EU by / Représenté en UE par:
NWL Belgium Services BVBA
Industriepark-Noord 30
9100 Sint-Niklaas - Belgium

Distributed in Poland by / Distribué en Pologne par:
Newell Poland SA
ul. Wybickiego 2, Manieczki
63-112 Brodnica – Poland

www.dymo.com
© 2010 Sanford, L.P.

W006481_B