



POWERSHRED® 225Ci/225i
 THE WORLD'S **TOUGHEST** SHREDDERS™



POWERSHRED® 225Ci/225i
 THE WORLD'S **TOUGHEST** SHREDDERS™

Factory Service

Questions or Concerns?

www.fellowes.com

- Troubleshooting
- Registration
- Manuals

Customer Service & Support

- Troubleshooting
- Replacement parts
- General questions

Canada	+1-800-665-4339
Mexico	+001-800-514-9057
United States	+1-800-955-0959



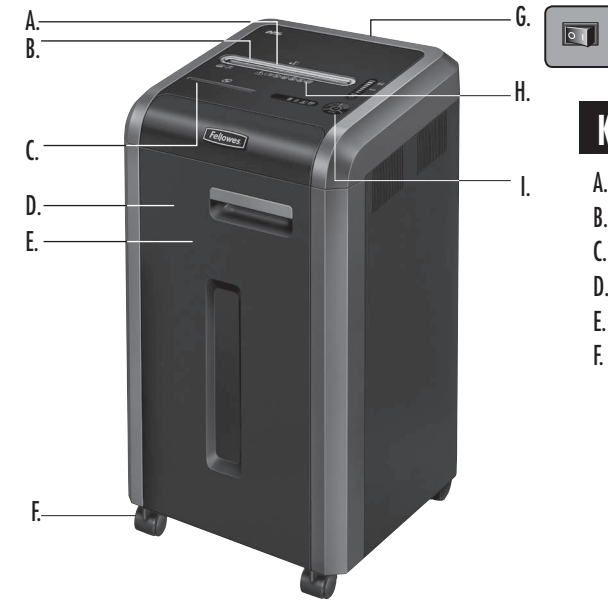
LIMITED PRODUCT WARRANTY

Limited Warranty: Fellowes, Inc. ("Fellowes") warrants the parts of the machine to be free of defects in material and workmanship and provides service and support for 1 year from the date of purchase by the original consumer. Fellowes warrants the cutting blades of the machine to be free from defects in material and workmanship for 1 year from the date of purchase by the original consumer. If any part is found to be defective during the warranty period, your sole and exclusive remedy will be repair or replacement, at Fellowes' option and expense, of the defective part. This warranty does not apply in cases of abuse, mishandling, failure to comply with product usage standards, shredder operation using an improper power supply (other than listed on the label), or unauthorized repair. Fellowes reserves the right to charge the consumers for any additional costs incurred by Fellowes to provide parts or services outside of the country

where the shredder is initially sold by an authorized reseller. ANY IMPLIED WARRANTY, INCLUDING THAT OF MERCHANTABILITY OR FITNESS FOR A PARTICULAR PURPOSE, IS HEREBY LIMITED IN DURATION TO THE APPROPRIATE WARRANTY PERIOD SET FORTH ABOVE. In no event shall Fellowes be liable for any consequential or incidental damages attributable to this product. This warranty gives you specific legal rights. The duration, terms, and conditions of this warranty are valid worldwide, except where different limitations, restrictions, or conditions may be required by local law. For more details or to obtain service under this warranty, please contact us or your dealer.

ENGLISH

Models 225Ci/225i



KEY

A. SafeSense® Technology	G. Disconnect power switch	I. Control Panel and LEDs
B. Paper/card entry	○ 1. OFF	◀◀ 1. Reverse
C. CD entry	I 2. ON	⏻ 2. ON/OFF
D. Door	H. See safety instructions	▶ 3. Forward
E. Basket		4. Auto
F. Casters (4)		🚪 5. Door open (red)
		🗑️ 6. Bin full (red)
		📄 7. Remove paper (red)
		⚠️ 8. SafeSense® indicator (yellow)

CAPABILITIES

Will shred: Paper, credit cards, CD/DVD, staples, small paper clips and junk mail

Will not shred: Adhesive labels, continuous form paper, transparencies, newspaper, cardboard, large paper clips, folders, X-rays or plastic other than noted above

Paper shred size:

Cross-Cut (225Ci) 5/32 in. x 1-1/2 in. (4mm x 38mm)
Strip Cut (225i) 7/32 in. (5.8mm)

Maximum:

Sheets per pass 20*
CDs/Cards per pass 1*
Paper entry width 9.5 in. (240mm)

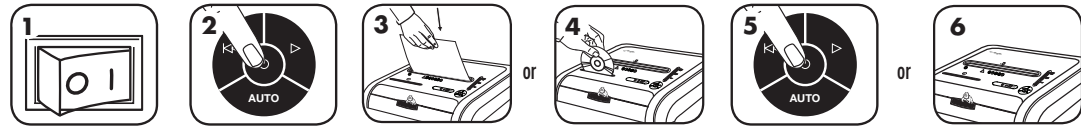
* 8.5"x11", 20lb., (75g) paper at 120V, 60 Hz, 6Amps; heavier paper, humidity or other than rated voltage may reduce capacity. Maximum recommended daily usage rates: 5000 sheets; 200 cards; 10 CDs.

Fellowes SafeSense® shredders are designed to be operated in office environments ranging between 50 – 80 degrees Fahrenheit (10 – 26 degrees Celsius) and 40 – 80% relative humidity.

⚠️ WARNING: IMPORTANT SAFETY INSTRUCTIONS — Read Before Using!

- Operation, maintenance, and service requirements are covered in the instruction manual. Read the entire instruction manual before operating shredders.
- Keep away from children and pets. Keep hands away from paper entry. Always set to off or unplug when not in use.
- Keep foreign objects – gloves, jewelry, clothing, hair, etc. – away from shredder openings. If object enters top opening, switch to Reverse (◀◀) to back out object.
- Never use aerosol products, petroleum based lubricants or other flammable products on or near shredder. Do not use canned air on shredder.
- Do not use if damaged or defective. Do not disassemble shredder. Do not place near or over heat source or water.
- This shredder has a Disconnect Power Switch (G) that must be in the ON (I) position to operate shredder. In case of emergency, move switch to OFF (O) position. This action will stop shredder immediately.
- Avoid touching exposed cutting blades under shredder head.
- Shredder must be plugged into a properly grounded wall outlet or socket of the voltage and amperage designated on the label. The grounded outlet or socket must be installed near the equipment and easily accessible. Energy converters, transformers, or extension cords should not be used with this product.
- FIRE HAZARD – Do NOT shred greeting cards with sound chips or batteries.
- For indoor use only.
- Unplug shredder before cleaning or servicing.

BASIC SHREDDING OPERATION



- 1 Plug in and put disconnect power switch in ON (I) position
- 2 Press (ON) to activate
- 3 Feed paper/card straight into paper entry and release
- 4 Hold CD/card at edge, and feed into center of entry and release
- 5 When finished shredding set to OFF (O)
- 6 Do nothing and shredder will go automatically to sleep mode after 2 minutes of inactivity

ADVANCED PRODUCT FEATURES



Jam Proof System
Eliminates paper jams and powers through tough jobs



Patented SafeSense® Technology
Stops shredding immediately when hands touch the paper entry

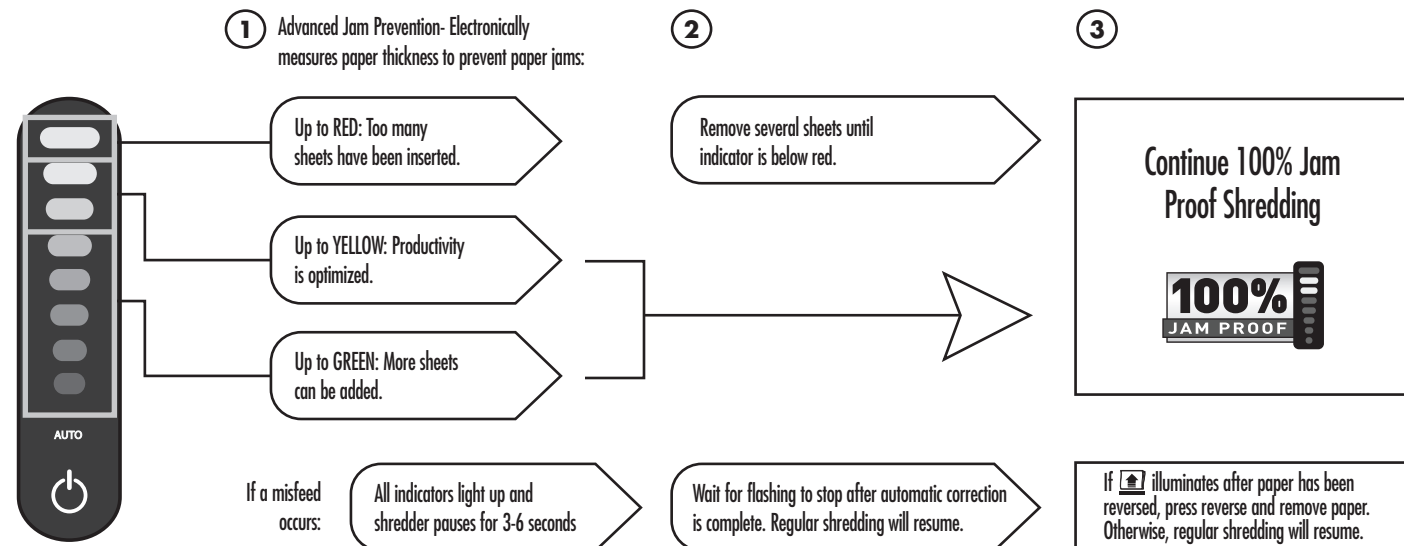


Energy Savings System
Optimal energy efficiency 100% of the time – in use and out of use.



JAM PROOF SYSTEM OPERATION*

Eliminates paper jams and powers through tough jobs.



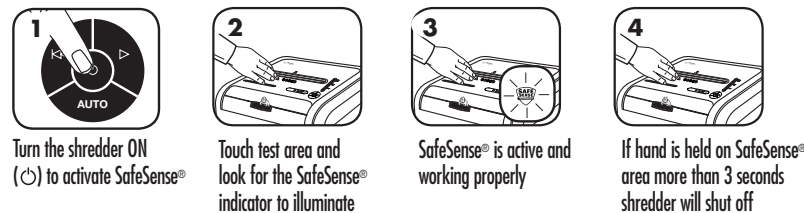
*100% Jam Proof when used in accordance with user manual



SAFESENSE® TECHNOLOGY OPERATION

Stops shredding immediately when hands touch the paper opening.

SET-UP AND TESTING



For more information about all of Fellowes Advanced Product Features go to www.fellowes.com

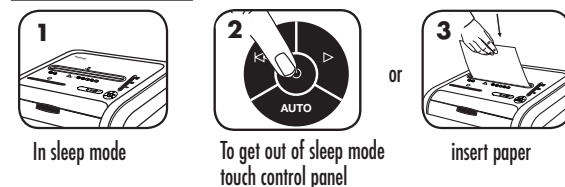


ENERGY SAVINGS SYSTEM

Optimal energy efficiency 100% of the time – in use and out of use.

- Saves energy in four ways: energy-efficient electronics, jam prevention, standby mode and sleep mode.
- Sleep Mode shuts down shredder after 2 minutes of inactivity.

WHEN IN SLEEP MODE



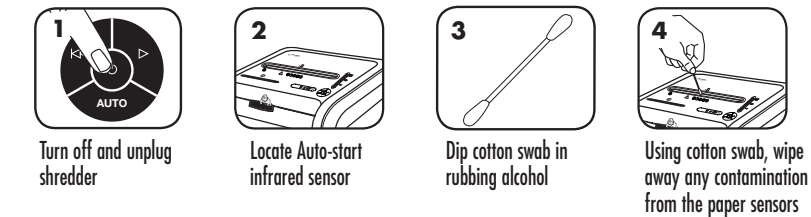
PRODUCT MAINTENANCE

CLEANING AUTO-START INFRARED SENSORS

Paper detection sensors are designed for maintenance free operation. However, on rare occasions, the sensors may become blocked by paper dust causing the motor to run even if there is no paper present.

(Note: two paper detection sensors are located in the center of the paper entry).

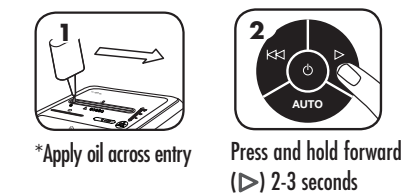
TO CLEAN THE SENSORS



OILING SHREDDER

All cross-cut shredders require oil for peak performance. If not oiled, a machine may experience diminished sheet capacity, intrusive noise when shredding and could ultimately stop running. To avoid these problems, we recommend you oil your shredder each time you empty your waste bin.

FOLLOW OILING PROCEDURE BELOW AND REPEAT TWICE



CAUTION *Only use a non-aerosol vegetable oil in long nozzle container such as Fellowes 35250

TROUBLESHOOTING

- Bin Open:** The shredder will not run if the bin is open. When illuminated, close the bin to resume shredding.
- Bin Full:** When illuminated, the shredder waste bin is full and needs to be emptied. Use Fellowes waste bag 36054.
- Remove Paper Indicator:** When illuminated, press reverse (R) and remove paper. Reduce paper quantity to an acceptable amount and refeed into paper entry.
- SafeSense® Indicator:** If hands are too close to the paper entry, the SafeSense® indicator will illuminate and the shredder will stop shredding. If SafeSense® is active for 3 seconds, the shredder will automatically turn off and the user must press the power button on the control panel to resume shredding.
- Self Cleaning Cycle:** Shredder periodically cycles in forward and reverse lasting 3-6 seconds (225Ci only).

Go to Support Section at www.fellowes.com or see back page of manual for useful telephone numbers.