



# Technical Data Sheet



Technical Data Sheet  
Ref: PR1000  
Issued: 09.09.21  
Number of pages: 2

## Pritt Glue Roller Refillable Permanent & Non-Permanent Versions

### PRODUCT DESCRIPTION:

Adhesive roller for easy and precise gluing jobs.



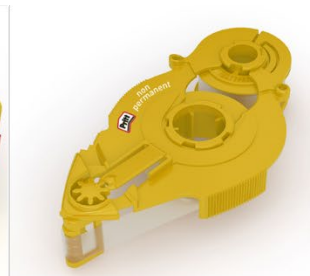
Permanent Roller



Permanent Refill



Non-Permanent Roller



Non-Permanent Refill

### TECHNICAL PRODUCT DESCRIPTION:

Injection moulded plastic parts made out of up to 50% recycled plastic, housing a siliconised polyester tape, coated with a polyacrylate based adhesive

### CHARACTERISTICS:

- Bonds cleanly, quickly and precisely
- Bonds permanently/non-permanently (depending on refill) to items such as paper, cardboard and photographs
- Strong non-tearable band (PET)
- Visible bond line due to coloured adhesive layer (Red permanent/Yellow non-permanent)
- Solvent free

### INSTRUCTIONS FOR USE:

Place paper/material to be glued on a smooth, flat and even surface.

Position the roller – printed side up – at a 45° angle and place it at the furthest glueing point. Apply a light, but firm pressure on the roller nib and draw the roller back over the surface you wish to glue. Ensure nib is kept flat during application. For a clean break, stop and lift up at a slight angle.



For the Non-Permanent roller always apply the adhesive to the disposable item, as the adhesive sticks permanently on the material to which it is first applied.



#### TECHNICAL DATA

Tape length	14m
Tape width	8,4mm
Shelf Life	2 years, stored in cool, dry conditions

#### HEALTH AND SAFETY

Before using the product please see related Material Safety Data Sheet that is available on request.

The information provided in this Technical Data Sheet (TDS) including the recommendations for use and application of the product are based on our knowledge and experience of the product as at the date of this TDS. The product can have a variety of different applications as well as differing application and working conditions in your environment that are beyond our control. Henkel is, therefore, not liable for the suitability of our product for the production processes and conditions in respect of which you use them, as well as the intended applications and results. We strongly recommend that you carry out your own prior trials to confirm such suitability of our product.

Any liability in respect of the information in the Technical Data Sheet or any other written or oral recommendation(s) regarding the concerned product is excluded, except if otherwise explicitly agreed and except in relation to death or personal injury caused by our negligence and any liability under any applicable mandatory product liability law.

#### Henkel Limited

Road 5, Winsford Industrial Estate, Winsford, Cheshire, CW7 3QY

Phone: +44 (0) 1606 593 933

Internet: [www.henkel.co.uk](http://www.henkel.co.uk)

e.mail: [technical.services@henkel.co.uk](mailto:technical.services@henkel.co.uk)