



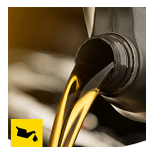
BESTRUN231 S3

All-time, low-cut safety shoe

Upper	Barton Action Leather
Lining	Mesh
Footbed	SJ foam footbed
Midsole	Steel
Outsole	PU/PU
Toecap	Steel
Safety standard	S3 / SRC
Size range	EU 35-48 / UK 3.0-13.0 US 3.0-13.5 / CM 23.0-31.5
Sample weight	0.661 kg
Norms	EN ISO 20345:2011 ASTM F2413:2018



BLK



Oil & fuel resistant

The outsole is resistant against oil and fuel.



Heat resistant outsole (HRO)

The outsole resists high temperatures up to 300°C.



Breathable leather upper

Natural leather provides a high degree of wearer comfort combined with durability in versatile applications.



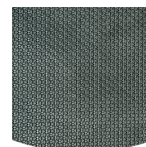
Antistatic

Antistatic footwear prevents build-up of static electrical charges and ensures that they are discharged effectively. Volume resistance between 100 KiloOhm and 1 GigaOhm



S3

S3 safety shoes are suitable for work in an environment with high humidity and presence of oil or hydrocarbons. These shoes also protect against perforation risk of the sole, and foot crushing.



Rubber outsole

Rubber outsoles provide versatile functions that make them suitable for many areas of application: excellent cut resistance, heat and cold resistance, high flexibility at cold temperatures, resistance against oil, fuel and many chemicals.

Industries:

Automotive, Catering, Chemical, Cleaning, Construction, Food & beverages, Logistics, Oil & Gas, Industry

Environments:

Muddy environment, Dry environment

Maintenance instructions:

To extend the life of your shoes, we recommend to clean them regularly and to protect them with adequate products. Do not dry your shoes on a radiator, nor nearby a heat source.

	Description	Measure unit	Result	EN ISO 20345
Upper	Barton Action Leather			
	Upper: permeability to water vapor	mg/cm ² /h	2.2	≥ 0.8
	Upper: water vapor coefficient	mg/cm ²	25	≥ 15
Lining	Mesh			
	Lining: permeability to water vapor	mg/cm ² /h	49.8	≥ 2
	Lining: water vapor coefficient	mg/cm ²	398.8	≥ 20
Footbed	SJ foam footbed			
	Footbed: abrasion resistance	cycles	400	≥ 400
Outsole	PU/PU			
	Outsole abrasion resistance (volume loss)	mm ³	56.4	≤ 150
	Outsole slip resistance SRA: heel	friction	0.37	≥ 0.28
	Outsole slip resistance SRA: flat	friction	0.34	≥ 0.32
	Outsole slip resistance SRB: heel	friction	0.14	≥ 0.13
	Outsole slip resistance SRB: flat	friction	0.18	≥ 0.18
	Antistatic value	MegaOhm	120.7	0.1 - 1000
	ESD value	MegaOhm	N/A	0.1 - 100
	Heel energy absorption	J	29	≥ 20
Toecap	Steel			
	Impact resistance toecap (clearance after impact 100J)	mm	N/A	NA
	Compression resistance toecap (clearance after compression 10kN)	mm	N/A	NA
	Impact resistance toecap (clearance after impact 200J)	mm	15	≥ 14
	Compression resistance toecap (clearance after compression 15kN)	mm	15	≥ 14

Sample size: 42

Our shoes are constantly evolving, the technical data above may change. All product names and brand Safety Jogger, are registered and may not be used or reproduced in any format, without written consent from us.