

PRODUCT SHORT DESCRIPTION:

Eco friendly and space saving multi surface dry erase boards

FEATURES AND BENEFITS:

- Three times the surface area
- Hide confidential or pre-prepared material
- Pen tray and wall fixings supplied
- Aluminium post-consumer and post-industrial waste material
- Cradle to Cradle Certified™ Silver

PRODUCT IMAGE:



MARKETING COPY:

Giving preference to recycled and recyclable materials in its manufacture, Bi-Office Earth! products combine fine quality with a responsive approach on the environmental issues our planet is now facing. In our pursuit for excellence we match our office and communication solutions with the highest standards in sustainable development.
Expand your presentation with our Trios. The Trios are closed cabinet boards that can be opened when needed to enlarge the writing or pin area or even hide pre-prepared contents.

APPLICATION AND SALES PROPOSITION:

- Eco-friendly
- Versatile presentation support
- Easy to expand to a larger presentation area

TARGET MARKET:

CHANNEL: Office products wholesalers, office products stores, decoration products wholesalers, decoration stores and other retailers
END USERS: conference centers, hotels, companies and organizations in general

ADDITIONAL NOTES:

Other information supports: our official websites, Youtube®, Facebook®, catalogue and online catalogue, demo videos and more.

PROMOTIONAL TIPS:

No specific timing, thus we recommend the occasional promotion like product and offering of cleaning kits or markers

RANGING TABLE:

Frame/Colour:	Surface/Colour:	Product Size Closed:	Product Size Open:	Packed mm	N.W. kg	G.W. kg	Reference:
Grey aluminium	Lacquered steel / White	900x600	1800x600	1042x610x24	7,63	8,28	TR01020509790
Grey aluminium	Lacquered steel / White	1200x900	2400x900	1360x910x40	15,10	16,66	TR02020509790
Grey aluminium	Lacquered steel / White	1500x1000	3000x1000	1650x1055x35	22	24,50	TR03020509790
Grey aluminium	Lacquered steel / White	1500x1200	3000x1200	1650x1255x35	26,5	31,5	TR06020509790
Grey aluminium	Lacquered steel / White	1800x1200	3600x1200	1960x1255x35	31	34,48	TR09020509790

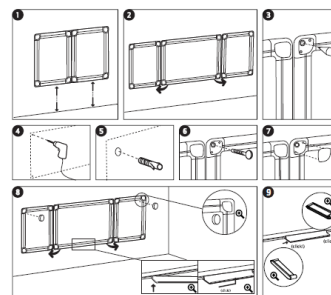
Grey aluminium	Lacquered steel / White	2000x1000	4000x1000	2150x1055x35	29,5	35	TR05020509790
Grey aluminium	Lacquered steel / White	2000x1200	4000x1200	2170x1270x35	35,5	41,5	TR07020509790
Grey aluminium	Lacquered steel / White	2400x1200	4800x1200	2560x1260x35	42,5	50	TR08020509790
Grey aluminium	Enamel / White	900x600	1800x600	1042x610x24	9,43	10,08	TR01030207790
Grey aluminium	Enamel / White	1200x900	2400x900	1360x910x40	18,87	20,43	TR02030207790
Grey aluminium	Enamel / White	1500x1000	3000x1000	1650x1055x35	26,10	28,60	TR03030207790
Grey aluminium	Enamel / White	1500x1200	3000x1200	1650x1255x35	31,50	36,5	TR06030207790
Grey aluminium	Enamel / White	1800x1200	3600x1200	1960x1255x35	38,6	42,08	TR09030207790
Grey aluminium	Enamel / White	2000x1000	4000x1000	2150x1055x35	36,40	41,90	TR05030207790
Grey aluminium	Enamel / White	2000x1200	4000x1200	2170x1270x35	44	50	TR07030207790
Grey aluminium	Enamel / White	2400x1200	4800x1200	2560x1260x35	53	60,5	TR08030207790
Grey aluminium	Enamel / Green	900x600	1800x600	1042x610x24	9,83	10,48	TR01040610790
Grey aluminium	Enamel / Green	1200x900	2400x900	1360x910x40	19,57	21,13	TR02040610790
Grey aluminium	Enamel / Green	1500x1000	3000x1000	1650x1055x35	27,10	29,60	TR03040610790
Grey aluminium	Enamel / Green	1500x1200	3000x1200	1650x1255x35	32,70	37,70	TR06040610790
Grey aluminium	Enamel / Green	1800x1200	3600x1200	1960x1255x35	40	43,48	TR09040610790
Grey aluminium	Enamel / Green	2000x1000	4000x1000	2150x1055x35	37,70	43,20	TR05040610790
Grey aluminium	Enamel / Green	2000x1200	4000x1200	2170x1270x35	45,6	51,6	TR07040610790
Grey aluminium	Enamel / Green	2400x1200	4800x1200	2560x1260x35	54,9	62,40	TR08040610790

TECHNICAL DETAILS

COMPOSITION:

- Aluminum frame
- Wooden based core with enamel or lacquered steel surface
- 10 year warranty (for lacquered steel surfaces)
- 25 year warranty (for enamel surface)

ASSEMBLY OVERVIEW:

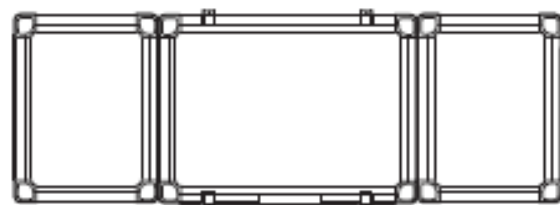


CERTIFICATION AND LEGISLATION:

Cradle to Cradle Certified™ Silver



ILLUSTRATION:



SUGGESTED ADVERT:**Earth Trio Maya Whiteboards****Eco friendly Space saving multi surface dry erase boards**

- Three times the surface area
- Hide confidential or pre-prepared material
- Pen tray and wall fixings supplied
- Aluminium post-consumer and post-industrial waste material
- Cradle to Cradle Certified™ Silver

**WITHIN FAMILY:**

- Earth Melamine board
- Earth Lacquered steel
- Earth Enamel board

QR CODE:

Author: Catarina Veiga

Approval:

Revision: 04
Date: 10-02-2020