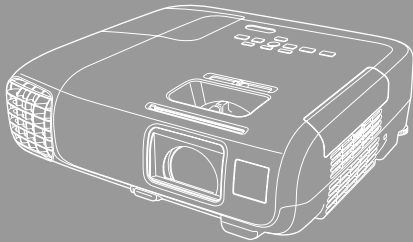


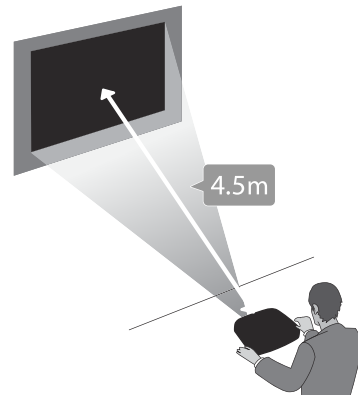
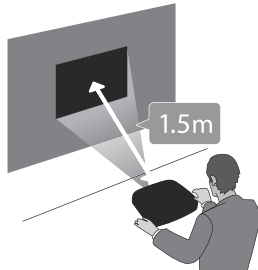
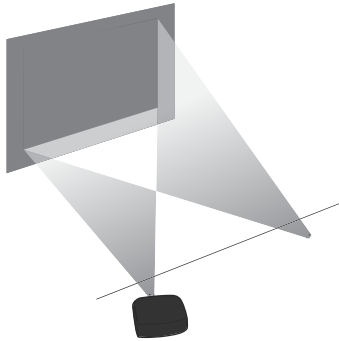
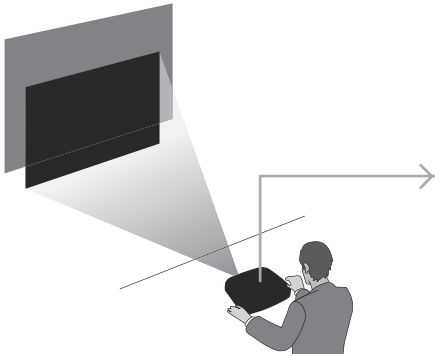
EPSON®
EXCEED YOUR VISION

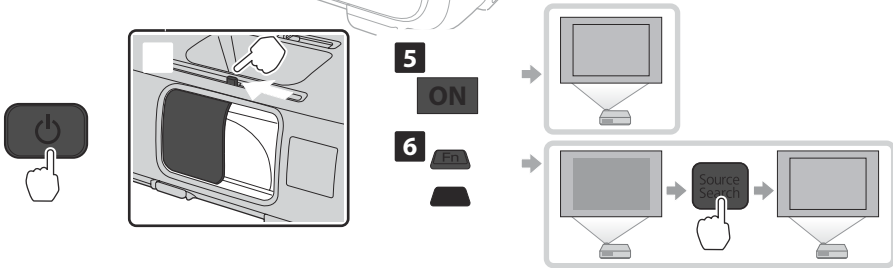
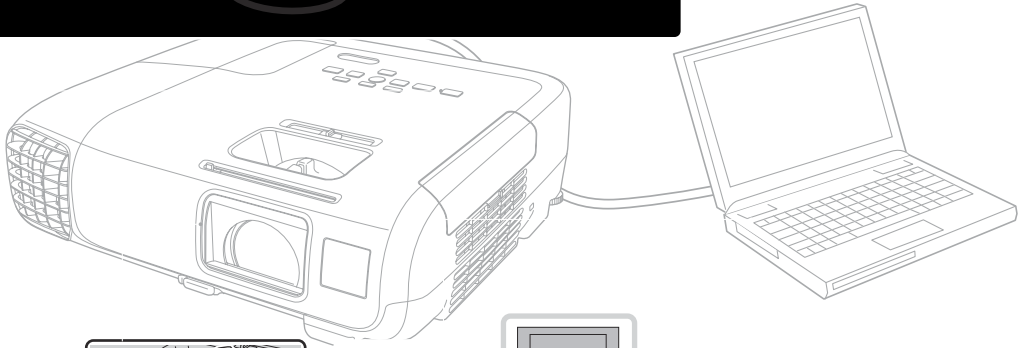
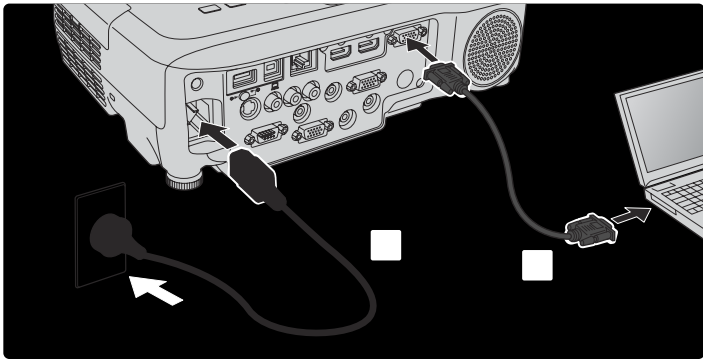
Multimedia Projector

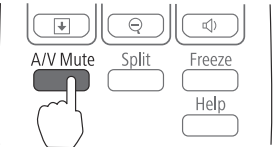
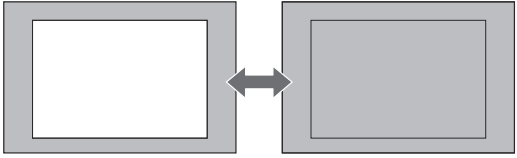
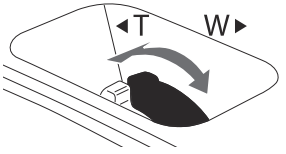
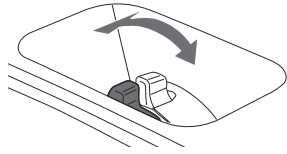
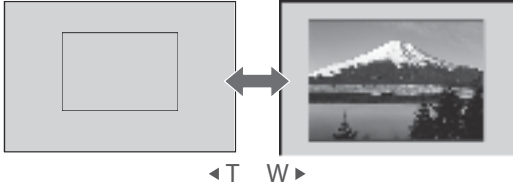
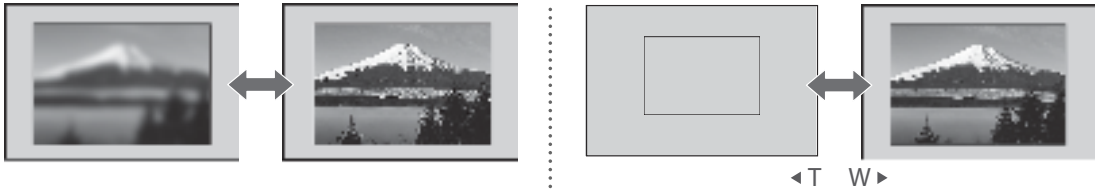
EB-955WH
EB-965H
EB-945H
EB-97H
EB-W29



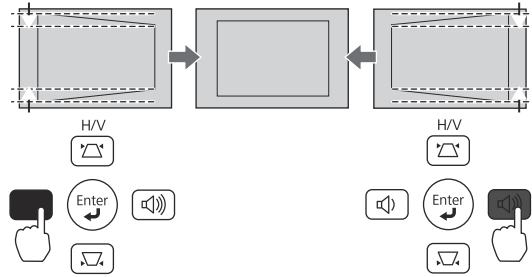
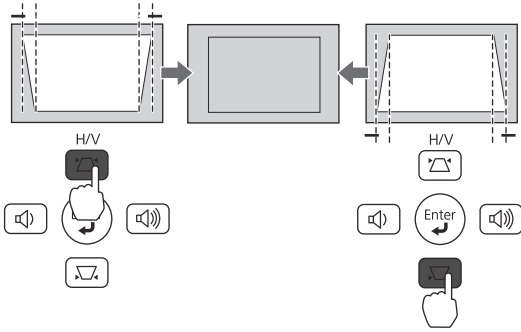
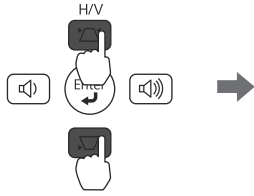
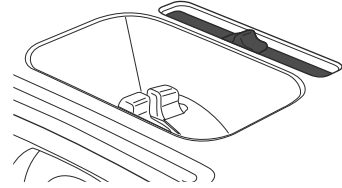
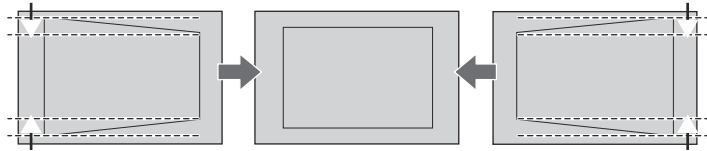
| | | | |
|----|-----------------------------|-----|-------------------------------------|
| EN | Quick Start Guide | LV | Ātrās darba uzsākšanas pamācība |
| DE | Kurzanleitung | LT | Trumpas pradžios vadovas |
| FR | Guide de démarrage rapide | EL | Οδηγός γρήγορης εκκίνησης |
| IT | Guida di avvio rapido | TR | Hızlı Başlangıç Kılavuzu |
| ES | Guía de inicio rápido | SL | Priročnik za hitri zagon |
| PT | Guia de Referência Rápida | HR | Kratke upute |
| NL | Introductiehandleiding | MK | Прирачник брз почеток |
| DA | Introduktion | SR | Uputstvo za brz početak |
| FI | Pika-aloitusopas | CA | Guia d'inici ràpid |
| NO | Hurtigveiledning | RU | Руководство по быстрой установке |
| SV | Snabbstartsguide | UK | Коротка інструкція "Початок роботи" |
| CS | Úvodní příručka | KK | Қысқа іске қосу нұсқаулығы |
| HU | Bevezetés | ID | Panduan Ringkas |
| PL | Przewodnik szybkiego startu | AR | دليل البداية السريعة |
| SK | Stručná príručka | FA | راهنمای سریع برای شروع بکار |
| BG | Ръководство за бърз старт | HE | מדריך להפעלה מהירה |
| RO | Ghid de pornire rapidă | ZHS | 設定手冊 |
| ET | Lühijuhend | ZHT | 設定說明書 |

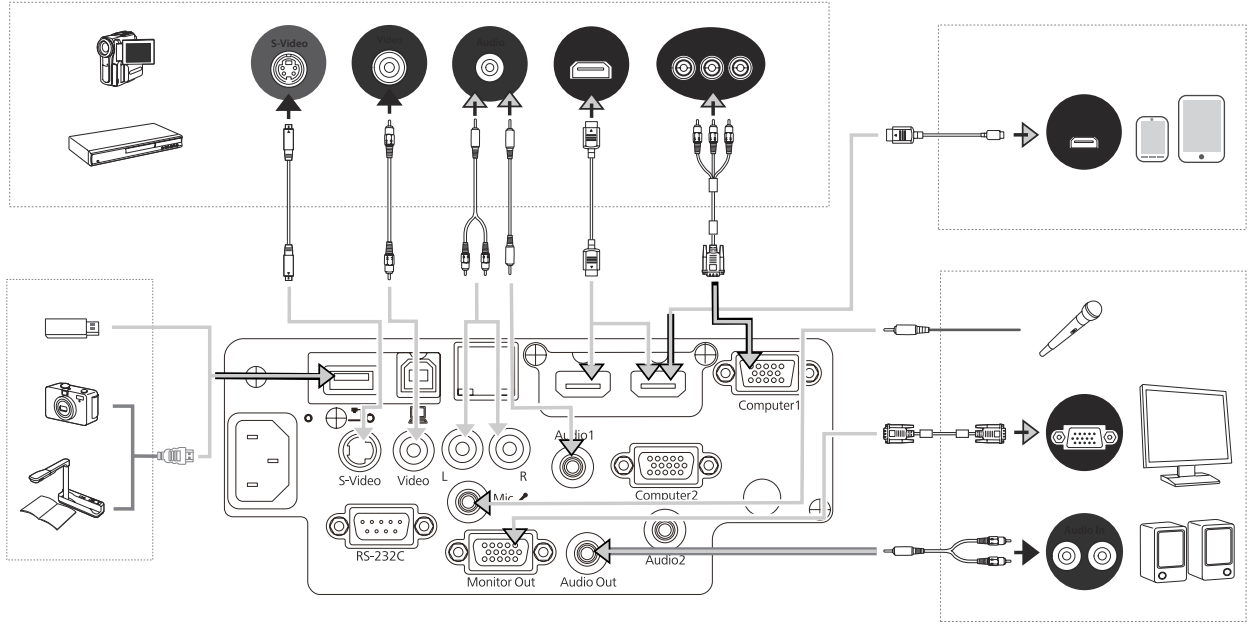




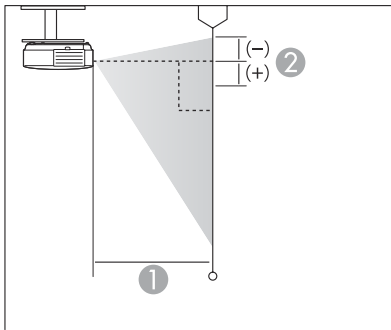
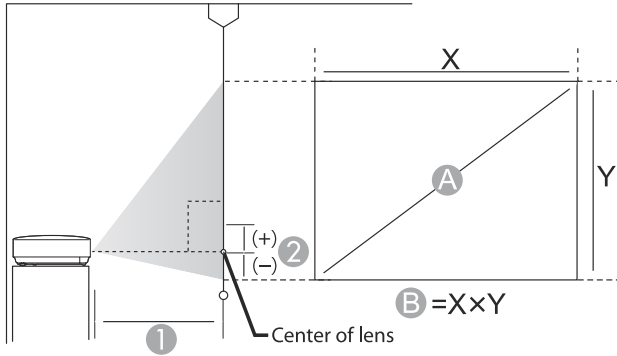


U1





Projection Distance Table



EB-955WH

Units: cm

| 4:3 XGA | | | |
|----------|-----------|--|----------|
| A | B | 1 Minimum (Wide) to Maximum(Tele) | 2 |
| 30" | 61 x 46 | 100 - 164 | -1 |
| 60" | 120 x 91 | 203 - 331 | -2 |
| 80" | 160 x 120 | 271 - 442 | -3 |
| 100" | 200 x 150 | 340 - 553 | -4 |
| 150" | 300 x 230 | 511 - 831 | -6 |
| 240" | 490 x 370 | 820 - 1330 | -9 |

| 16:9 Widescreen | | | |
|-----------------|-----------|--|----------|
| A | B | 1 Minimum (Wide) to Maximum(Tele) | 2 |
| 32" | 71 x 40 | 97 - 159 | 1 |
| 60" | 130 x 75 | 184 - 300 | 2 |
| 80" | 180 x 100 | 246 - 401 | 3 |
| 100" | 220 x 120 | 308 - 502 | 3 |
| 150" | 330 x 190 | 464 - 754 | 5 |
| 270" | 600 x 340 | 837 - 1359 | 9 |

| 16:10 WXGA | | | |
|------------|-----------|--|----------|
| A | B | 1 Minimum (Wide) to Maximum(Tele) | 2 |
| 33" | 71 x 44 | 97 - 159 | -1 |
| 60" | 130 x 81 | 179 - 292 | -2 |
| 80" | 170 x 110 | 239 - 390 | -3 |
| 100" | 220 x 130 | 300 - 488 | -3 |
| 150" | 320 x 200 | 451 - 733 | -5 |
| 280" | 600 x 380 | 845 - 1371 | -9 |

EB-965H/945H

Units: cm

| 4:3 XGA | | | |
|---------|-----------|---|-----|
| A | B | ① Minimum (Wide) to Maximum(Tele) | ② |
| 30" | 61 x 46 | 83 - 136 | -5 |
| 60" | 120 x 91 | 169 - 275 | -10 |
| 80" | 160 x 120 | 226 - 368 | -13 |
| 100" | 200 x 150 | 283 - 460 | -16 |
| 150" | 300 x 230 | 426 - 692 | -24 |
| 300" | 610 x 460 | 854 - 1386 | -48 |

| 16:9 Widescreen | | | |
|-----------------|-----------|---|----|
| A | B | ① Minimum (Wide) to Maximum(Tele) | ② |
| 30" | 66 x 37 | 91 - 149 | 1 |
| 60" | 130 x 75 | 184 - 300 | 2 |
| 80" | 180 x 100 | 246 - 401 | 3 |
| 100" | 220 x 120 | 308 - 502 | 3 |
| 150" | 330 x 190 | 464 - 754 | 5 |
| 275" | 610 x 340 | 853 - 1384 | 10 |

EB-97H

Units: cm

| 4:3 XGA | | | |
|---------|-----------|---|-----|
| A | B | ① Minimum (Wide) to Maximum(Tele) | ② |
| 30" | 61 x 46 | 89 - 107 | -5 |
| 60" | 120 x 91 | 180 - 217 | -10 |
| 80" | 160 x 120 | 241 - 290 | -14 |
| 100" | 200 x 150 | 302 - 363 | -17 |
| 150" | 300 x 230 | 454 - 546 | -25 |
| 300" | 610 x 460 | 912 - 1095 | -51 |

| 16:9 Widescreen | | | |
|-----------------|-----------|---|---|
| A | B | ① Minimum (Wide) to Maximum(Tele) | ② |
| 30" | 66 x 37 | 97 - 117 | 1 |
| 60" | 130 x 75 | 196 - 236 | 1 |
| 80" | 180 x 100 | 263 - 316 | 2 |
| 100" | 220 x 120 | 329 - 396 | 2 |
| 150" | 330 x 190 | 495 - 595 | 3 |
| 275" | 610 x 340 | 910 - 1093 | 6 |

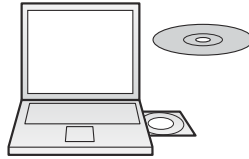
EB-W29

Units: cm

| 4:3 XGA | | | |
|---------|-----------|---|-----|
| A | B | ① Minimum (Wide) to Maximum(Tele) | ② |
| 30" | 61 x 46 | 94 - 113 | -4 |
| 60" | 120 x 91 | 190 - 229 | -8 |
| 80" | 160 x 120 | 255 - 306 | -11 |
| 100" | 200 x 150 | 319 - 383 | -14 |
| 150" | 300 x 230 | 480 - 577 | -20 |
| 280" | 570 x 430 | 898 - 1079 | -38 |

| 16:9 Widescreen | | | |
|-----------------|-----------|---|-----|
| A | B | ① Minimum (Wide) to Maximum(Tele) | ② |
| 32" | 71 x 40 | 91 - 109 | -2 |
| 60" | 130 x 75 | 172 - 208 | -3 |
| 80" | 180 x 100 | 231 - 278 | -4 |
| 100" | 220 x 120 | 289 - 348 | -5 |
| 150" | 330 x 190 | 435 - 523 | -8 |
| 310" | 690 x 390 | 903 - 1084 | -17 |

| 16:10 WXGA | | | |
|------------|-----------|---|-----|
| A | B | ① Minimum (Wide) to Maximum(Tele) | ② |
| 33" | 71 x 44 | 91 - 110 | -4 |
| 60" | 130 x 81 | 168 - 202 | -7 |
| 80" | 170 x 110 | 225 - 270 | -10 |
| 100" | 220 x 130 | 281 - 338 | -12 |
| 150" | 320 x 200 | 424 - 509 | -18 |
| 320" | 690 x 430 | 907 - 1089 | -39 |



Printed in China
XX.XX-XX(XXX)



412792500