

Huhtamaki

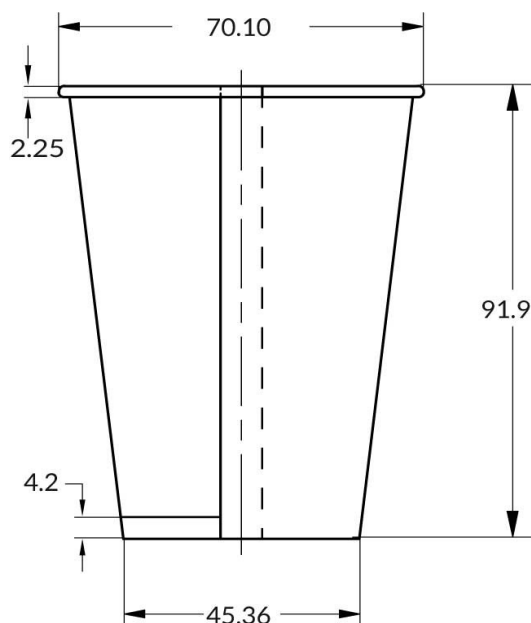
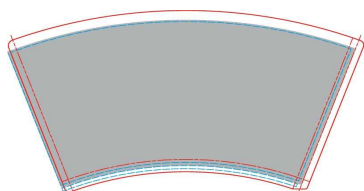
SPECIFICATION

PRODUCT:
PAPER CUP
SP8C
Cup for hot drinks, Single Wall | 180 ml
CGRVA7656
KUB SP8C TREE L-COAT
MATERIAL:

sidewall	PAP 1PE
bottom	PAP 1PE

CUP PROPERTIES:
tolerance

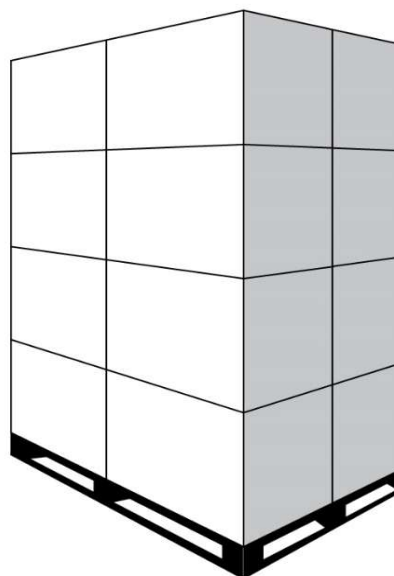
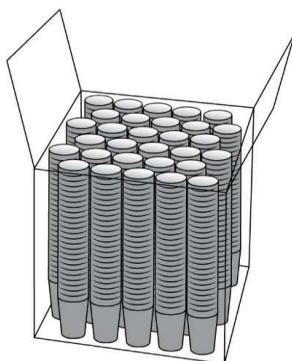
weight [g]	4,37	-/+ 0,3
height [mm]	91,9	-/+ 0,4
overall diameter [mm]	70,10	-/+ 0,25
rim thickness [mm]	2,25	-/+ 0,15
stack height [mm]	508	-/+ 10
fill volume	180	-/+ 15
brimful volume	218	-/+ 15


PACKAGING
BOX

units/stack	100
stacks/box	30
units/box	3000
box unladen weight [kg]	0,8
sleeve unladen weight [g]	7
box gross weight [kg]	14,1
box dimensions ID [mm]	401/401/520

PALLET

box/layer	6
layers/pallet	4
box/pallet	24
units/pallet	72000
pallet dimensions [mm]	1200x800x150
pallet gross height [mm]	2262
pallet gross weight [kg]	364


ITEM CUST
CGRVA7656
EAN PRODUCT
5901460276569
EAN INNER
STORAGE CONDITIONS

Products should be stored sealed in their original cases and sleeves to prevent contamination, shielded from direct sunlight or other sources of heat. The warehouse should be dry and well ventilated, storage temperature range should be between 10oC to 35oC, relative humidity should not exceed 70%. Pallets should not be stacked.

SHELF LIFE

24 months from production date

PREPARED BY/DATE

P. Margol

16.05.2024

PE CONTENT IN TOTAL [g]

0,23

PE CONTENT IN TOTAL %

4,88%