

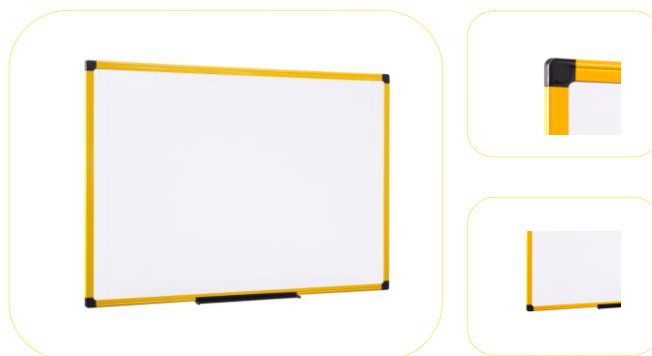
PRODUCT SHORT DESCRIPTION:

Heavy duty board with higher visibility

FEATURES AND BENEFITS:

- Highly visible aluminium yellow frame
- Highly resistant construction
- Aluminium pen tray simply clips onto frame in any position
- Wall fixings supplied

PRODUCT IMAGE:



MARKETING COPY:

Industrial boards are very important for measuring work efficiency and metrics, improving tracking and visual factory needs.

Bi-silque has developed a wide range of wall presentation solutions from Whiteboards, Trio whiteboards, Rail systems, Display cases to Display stands.

These wall solutions are also available with fixed and mobile structures which increase flexibility inside the industrial area.

APPLICATION AND SALES PROPOSITION:

- Enhanced presentation in a simple and easy way
- Easily mount Maya boards on any wall. The specially designed corner pieces add resistance and durability to every product in this line.

TARGET MARKET:

CHANNEL: Industrial Sector, Office products wholesalers, office products stores, other retailers and building contractors

END USERS: Industrial Companies, public buildings, public store buildings and private and public buildings in general

ADDITIONAL NOTES:

Other information supports: our official websites, Youtube®, Facebook®, catalogue and online catalogue, demo videos and more.

PROMOTIONAL TIPS:

No specific timing, thus we recommend the occasional promotion like offering of accessories.

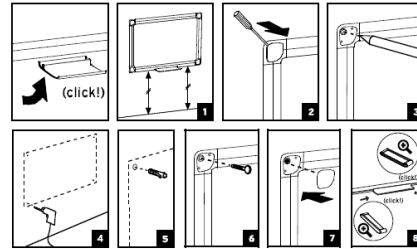
RANGING TABLE:

Frame/Colour:	Surface/Colour:	Product Size:	Packed mm	N.W. kg	G.W. kg	Reference:	RRP:
Aluminium	Lacquered steel	600x450	720x470x22	1,55	2,10	MA0215177	---
Aluminium	Lacquered steel	900x600	1030x620x25	2,93	3,91	MA0315177	---
Aluminium	Lacquered steel	1200x900	1330x920x25	5,59	7,44	MA0515177	---
Aluminium	Lacquered steel	1200x1200	1330x1260x25	7,33	9,79	MA3815177	---
Aluminium	Lacquered steel	1500x1000	1650x1050x25	7,64	10,12	MA1515177	---
Aluminium	Lacquered steel	1500x1200	1650x1260x25	9,07	12,05	MA1215177	---

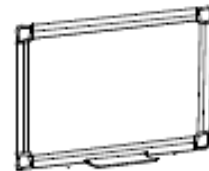
Frame/Colour:	Surface/Colour:	Product Size:	Packed mm	N.W. kg	G.W. kg	Reference:	RRP:
Aluminium	Lacquered steel	1800x900	2000x940x25	8,25	10,87	MA0715177	---
Aluminium	Lacquered steel	1800x1200	2000x1260x25	10,82	14,30	MA2715177	---
Aluminium	Lacquered steel	2000x1000	2200x1050x25	10,08	13,28	MA2215177	---
Aluminium	Lacquered steel	2000x1200	2200x1260x25	11,00	14,30	MA2815177	---
Aluminium	Lacquered steel	2400x1200	2590x1260x25	14,31	18,82	MA2115177	---
Aluminium	Enamel	600x450	720x470x22	1,89	2,45	CR0406177	---
Aluminium	Enamel	900x600	1030x620x25	3,61	4,60	CR0606177	---
Aluminium	Enamel	1200x900	1330x920x25	6,96	8,81	CR0806177	---
Aluminium	Enamel	1200x1200	1330x1260x25	9,16	11,62	CR1706177	---
Aluminium	Enamel	1500x1000	1650x1050x25	9,54	12,02	CR0906177	---
Aluminium	Enamel	1500x1200	1650x1260x25	11,36	14,33	CR1006177	---
Aluminium	Enamel	1800x900	2000x94x25	10,30	12,93	CR1106177	---
Aluminium	Enamel	1800x1200	2000x1260x25	13,56	17,05	CR1206177	---
Aluminium	Enamel	2000x1000	2200x1050x25	12,62	15,82	CR1306177	---
Aluminium	Enamel	2000x1200	2200x1260x25	13,20	16,40	CR1406177	---
Aluminium	Enamel	2400x1200	2590x1260x25	17,96	22,47	CR1506177	---

TECHNICAL DETAILS**COMPOSITION:**

- Aluminium frame
- Plastic corners with caps
- Wooden based core with enamel, lacquered steel or white melamine on chipboard
- melamine surface: 5 year warranty
- lacquered steel surface: 10 year warranty
- enamel surface: 25 year warranty

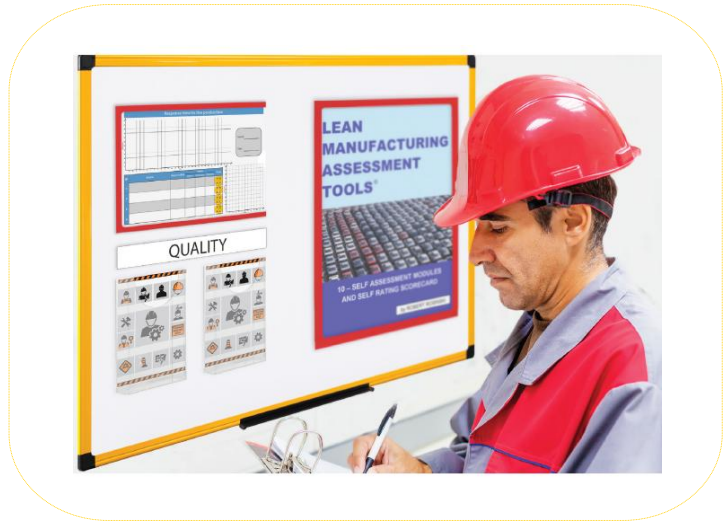
**TECHNICAL DETAILS****CERTIFICATION AND LEGISLATION:**

n/a

ILLUSTRATION:

SUGGESTED ADVERT:**Industrial Ultrabrite Whiteboard****Heavy duty board with higher visibility**

- Highly visible aluminium yellow frame
- Highly resistant construction
- Aluminium pen tray simply clips onto frame in any position
- Wall fixings supplied

**WITHIN FAMILY:**

- Maya Aluminium Framed Whiteboard

QR CODE:

Author: Ana Oliveira

Approval:

Revision: 00
Date: 22-03-2016