

**#23505**

Unidade de alimentação ininterrupta (UPS) de 1500 VA

Unidade de alimentação ininterrupta (UPS) de 1500 VA fiável, com 4 tomadas elétricas, indicadas para alimentar e proteger os seus dispositivos eletrónicos

Características principais

- Unidade de alimentação ininterrupta (UPS) de 1500 VA fiável com bateria incorporada
- Proporciona uma reserva de carga durante falhas de corrente, evitando perda de dados e danos no hardware
- 4 tomadas elétricas com bateria e proteção contra sobretensões para ligar o computador, periféricos, equipamentos de rede, TV de ecrã plano, equipamentos de domótica ou o sistema de alarme
- Saídas protegidas contra sobretensão para evitar danos causados por sobretensões, picos e flutuações de corrente
- Porta USB e software para monitorizar o estado do UPS, enviar alertas e desligar automaticamente o seu computador
- A função AVR garante uma corrente estável de 230 V



O que está na caixa

- Unidade UPS (Unidade de alimentação ininterrupta)
- Cabo USB
- Guia do utilizador

Requisitos de sistema

- Ligação à tomada de parede com terra
- Para o software: Windows 10/8/7, porta USB
- 155MB de espaço livre em disco rígido
- Software mais recente transferível em:
• www.trust.com/23505/driver

**4X POWER
OUTLETS****USB
MONITORING****1500^{VA}
BATTERY****SURGE
PROTECTION**



The Ultimate Backup

You can rest easy, knowing that the Trust Paxxon 1500VA is keeping an eye out for your devices. The reliable UPS is an ideal secondary power source to your electronics, keeping them running temporarily during power grid blackouts, and protecting them from power surge damage.

High Capacity

With 4 standard wall power outlets, the Paxxon is equipped to protect whatever device or peripheral is connected to it: computer, TV, gaming console, home automation or alarm system, router or modem, or other wall-powered devices. With its high-capacity battery, you can connect devices up to a maximum total of 900 Watts or 1500VA.

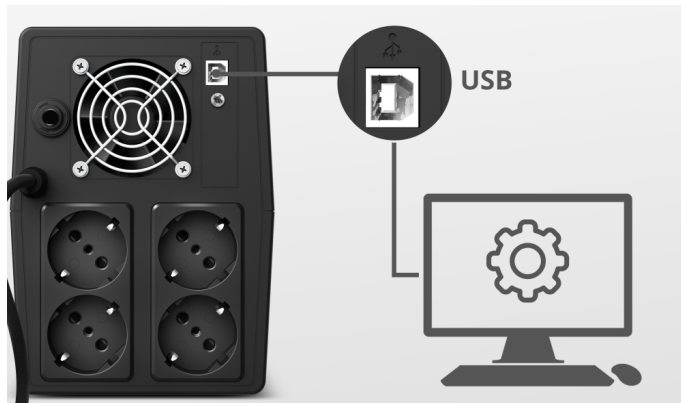


Safe Shutdown

During a blackout, the UPS' large battery generously covers the power needs of an average PC setup. With 7 minutes of runtime* to save your work and safely shut the system down, the quality of your files and equipment is guaranteed to be maintained. Even at full use of the 900W capacity, this UPS can keep your systems fully operational for 80 seconds.* At 450W capacity load

Extra Options

Paxxon's USB connection and downloadable PC software enable you to program the UPS to execute an automated shutdown, in case of a power outage. If you'd rather save your work and power off manually, the software allows you to set custom visible and audible signals to alert you, as well as monitor the power supply status at all times.





Stable Output

Thanks to the AVR function, the UPS will maintain a stable output voltage. In the event of power surges or spikes, your equipment is in safe hands. So safe, that we're offering an extended warranty of up to € 20.000 on connected equipment.**** Check conditions on trust.com

GERAL

Height of main product (in mm)	320 mm	Width of main product (in mm)	182 mm
Depth of main product (in mm)	130 mm	Total weight	10000 g
Weight of main unit	10000 g		

OUTPUT

Output power capacity (VA)	1500 VA	Output power capacity (W)	900 W
Output voltage range	Nominal voltage	Frequency response UPS	50Hz +/- 1Hz
Waveform type	Simulated sine wave		

PROTECTION

Protections	Child safety shutter, current-recoil, over-charge, over-cranking, over-current, over-discharge, over-heat, over-load, short-circuit	Auto Voltage Regulation	True
RFI-filter	False	Surge protected AC outlets	True
Surge protected phone line	False		

POWER

Number of batteries	2	Battery composition (Alkaline, Li-ion, etc.)	Lead Acid
Power inlet connection	Schuko (Type F)	Power outlet socket type	Schuko, Type L
Battery capacity (Ah)	9 Ah	Battery voltage (V)	12 V
Number of power outlets	4	Battery charge time (hours)	8 hours
100% capacity runtime (seconds)	80 seconds	50% capacity runtime (minutes)	7 minutes

FEATURES

Management function (USB)	True	USB connection	True
Status display	False	Audible alarm	True
Software	True		

INPUT

Nominal input voltage	220-240Vac	Operating voltage range	162-290Vac
------------------------------	------------	--------------------------------	------------

CONNECTIVITY

Cables included	USB-B to USB-A	Cable detachable	False
Cable length main cable	140 cm		

CONTROL

Indicators

Battery, Battery empty,
Charging, Overload, Power



PRODUCT VISUAL 1

EMERGENCY BATTERY BACK-UP

Prevents loss of data and hardware damage during power outage



VISUAL ALERT



AUDIBLE ALERT



SAFE SHUTDOWN



PRODUCT PICTORIAL 1

1500VA OUTPUT

4 Battery and surge protected wall power outlets



PRODUCT PICTORIAL 2

FULLY PROTECTED



SURGE PROTECTED



OVERLOAD + SHORT CIRCUIT

AVR
AUTOMATIC VOLT REGULATION

€20.000
EXTENDED WARRANTY



PRODUCT PICTORIAL 3

UPS MONITORING

USB port and software to monitor the status of the UPS



SENDING ALERTS



AUTOMATIC SHUTDOWN



FREE SOFTWARE AT
TRUST.COM/23505/DRIVER



PRODUCT PICTORIAL 4

MULTIPURPOSE USE

Provides back-up power in many situations



PC & MONITOR + PERIPHERALS



TV



HOME AUTOMATION OR ALARM SYSTEM



NAS SERVER



GAME CONSOLE



NETWORKING EQUIPMENT

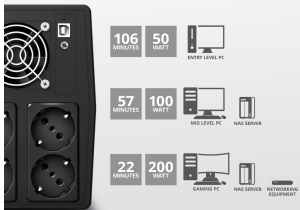


OTHER DEVICES UP TO 900W



PRODUCT PICTORIAL 5

BACK-UP RUNTIME



Values depend on connected devices and are for indication only

PRODUCT PICTORIAL 6



1500 VA
BATTERY



4X POWER OUTLETS



SURGE PROTECTION



USB MONITORING

PRODUCT ESHOT 1



PRODUCT FRONT 1



PRODUCT VISUAL 2



PRODUCT BACK 1



LIFESTYLE VISUAL 1